

# KERN RIVER VALLEY

## Fuel Reduction Projects



February 2012

# Collaboration Group Charter

## Issues

The Kern River Valley and Kern Plateau areas (areas) in Tulare and Kern Counties have four government agencies and one non-government group responsible for community fire protection and hazardous fuels management.

- Kern River Valley Fire Safe Council (KRVFSC) – Including the Kennedy Meadows area
- Tulare County Fire Department
- Kern County Fire Department
- DOI Bureau of Land Management – Bakersfield Field Office
- USDA Forest Service – Sequoia National Forest
- The areas have a significant history of damaging wildfires and will continue to experience damaging, fast spreading and high intensity wildfires into the foreseeable future.
- Long range fuels management and community protection planning must be coordinated between the government agencies and the Kern River Valley Fire Safe Council.
- Federal and state law and policies prescribe a collaborative approach to community wildfire protection that is driven by the affected communities.

## Purpose

The purpose of the collaboration group (group) is to work under the auspices of the Kern River Valley Fire Safe Council to:

- Share and review community threat and hazardous fuels analysis and existing plans. Work to improve integration and consistency of analysis and planning. The Southern Sierra Geographic Information Cooperative and FIRESHED may be useful to help with improving analysis capabilities.
- Review, develop and implement long-range community protection and hazardous fuels management strategies for areas that need cross-jurisdictional boundary, integrated coordination.
- Develop cooperative projects and establish project priorities.
- The intent of the group is not to interfere with or compromise agency specific planning and projects but rather to promote community based cooperation and collaboration.
- The group does not interfere with or influence CEQA or NEPA planning or decisions. The group's intent is to develop project proposals and work to build consensus about project priorities that will be implemented by the agencies and the KRVFSC, based on their respective legal and policy directions.

## Process

- The group is chartered by the Kern River Valley Fire Safe Council Board of Directors (Board). The Board oversees and directs group work.
- The group will meet on an ad-hoc, as needed basis. Representatives should assign an alternate to attend meetings if they have a conflict.
- The group will select a chairperson annually at the beginning of the new-year.
- The group will provide meeting notes to the Board that documents group work and recommendations to the Board.
- The group will work to build consensus, but consensus may not be attained because of conflicting or unrelated agency policies.
- The Board may modify this charter at any time.

## Members

The group is comprised of representatives from each of the following:

- Kern River Valley Fire Safe Council – Richard Olson, Ed Royce
- Tulare County Fire Department – Phil Brown
- Kern County Fire Department – John Smith
- USDI Bureau of Land Management – Bakersfield Field Office – Kevin Chambers (Dave Brinsfield)
- USDA Forest Service – Sequoia National Forest – Scott Williams

## Kern River Valley Fuel Reduction Projects

Project Name	Map Key
<b>Wofford Heights &amp; Alta Sierra Sub-Region</b>	
Alta Sierra Fuelbreak (USFS Alta Sierra Phase 1)	WH-1
Summit	WH-2
Ice/Tillie Ice Thinning Ice Prescribed Burning Tillie Prescribed Burning	WH-3
Hungry Gulch	WH-4
Sawmill (Lake Isabella Highlands) (Willow Flat)	WH-5
CND Wagy Flat	WH-6
Pala Ranches (Phase 1) Mountain Shadows (Phase 2)	WH-7
Dutch Flat	WH-8
Alta Sierra and Wofford Heights Fuel Reduction Project	WH-9
Wofford	WH-10
Slick Rock	WH-11
USFS Wagy Flat	WH-12
Alta Sierra Escape Routes	WH-13
Alta Sierra Fuels Reduction Project	WH-14
Green Mountain Park-USFS	WH-15
Rancheria Forest Restoration	WH-16
Red Mountain Thinning	WH-17
<b>Kernville Sub-Region</b>	
Burma Extension	KV-1
Plater Road	KV-2
Frontier Homes	KV-3
Grandview	KV-4
Kernville/River Kern Hazard Fuels Reduction	KV-5
Rodgers Road Rodgers Road 2	KV-6
Tollefson	KV-7
<b>Lake Isabella Sub-Region</b>	
Bodfish Canyon	LI-1
Erskine	LI-2
Lynch Canyon	LI-3
Meyers Canyon	LI-4
Squirrel Valley	LI-5
Yankee Canyon	LI-6

Lake Isabella	LI-7
<b>East Valley Sub-Region</b>	
Jacks	EV-1
Walker Pass	EV-2
Walker Pass Subdivision	EV-3
Fay Ranch	EV-4
<b>Kennedy Meadows Sub-Region</b>	
Kennedy Meadows	KM-1
BLM Kennedy Meadows Roadside	KM-2
<b>Piute &amp; Kelso Valley Sub-Region</b>	
Valley View	P/K-1
Valley View	P/K-2
<b>Havilah &amp; Walker Basin Sub-Region</b>	
Piute Meadows Community Escape Route	H/WB-1
Dutchman	H/WB-2
Red Mountain Subdivision	H/WB-3
<b>Kern Canyon &amp; Breckenridge Sub-Region</b>	
Breckenridge Subdivision	KC/B-1
<b>Lorraine Sub-Region</b>	
No projects identified to date	

CND – Bureau of Land Management, Bakersfield Office / [Central California Region Fire and Aviation Management Program](#)

CDD – Bureau of Land Management, California Desert District

KRVFSC – Kern River Valley Fire Safe Council

KRN – Kern County Fire Department

TCO – Tulare County Fire Department

USFS – United States Forest Service, Sequoia National Forest, Kern River Ranger District

EV = East Valley

H/WB = Havilah/Walker Basin

KM = Kennedy Meadows

KV = Kernville

KC/B = Kern Canyon & Breckenridge

LI = Lake Isabella

L = Lorraine

P/K = Piutes & Kelso Valley

WH = Wofford Heights & Alta Sierra

**Implementation Phase** – The project is being completed.

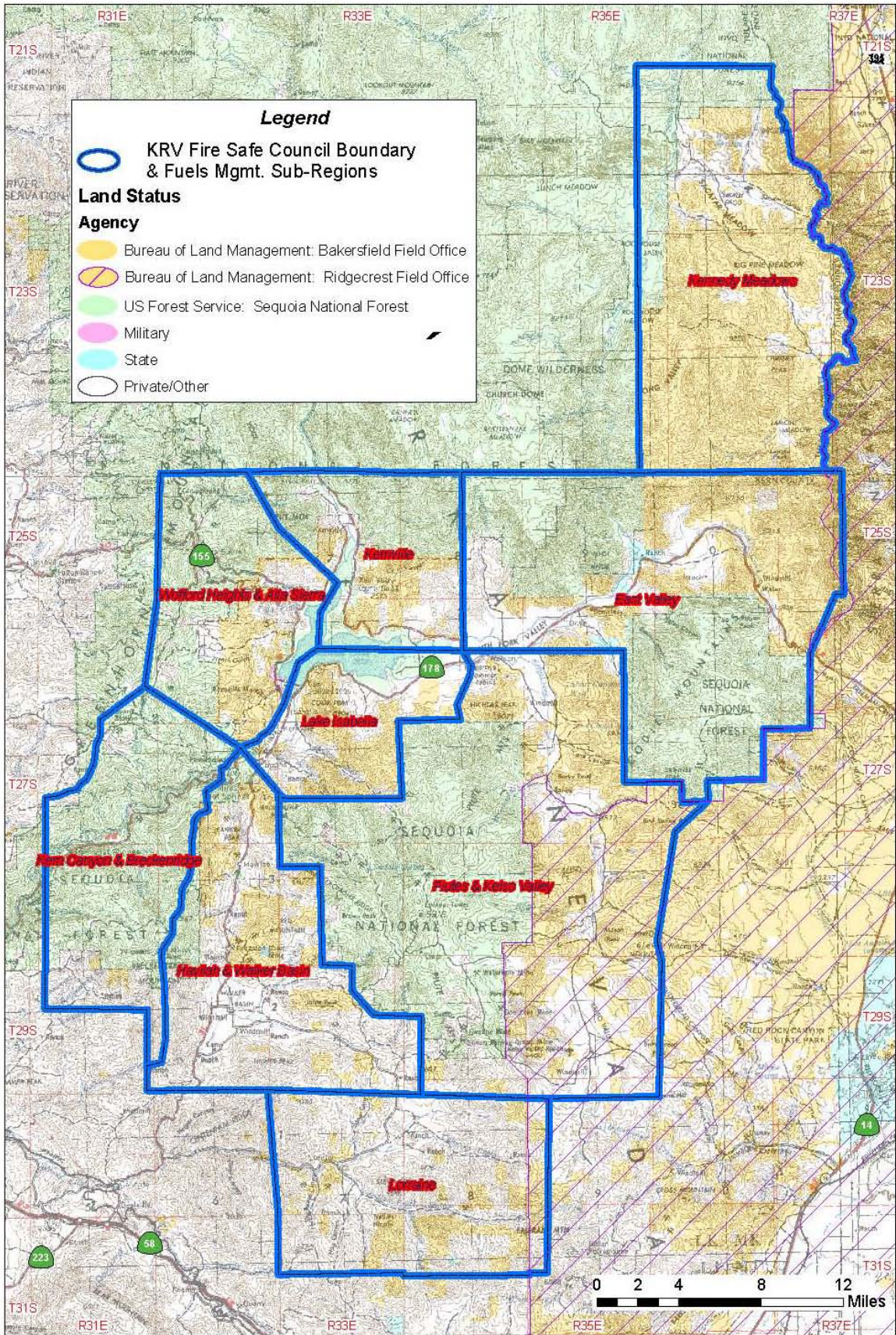
**Maintenance Phase** – All projects in shrub fuels need maintenance about every 2 years.

**NEPA / CEQA Phase** – The proposed project is going through the environmental compliance process.

**Out Year Project** – Out year new KRVFSC grant proposal projects or new CND / USFS projects.



# Fuel Treatment Areas





**Projects Description – Updated November 17, 2011**

<b>Project Name And Status</b>	<b>Map Key</b>	<b>Project Location and Size</b>	<b>Type of Project</b>	<b>Responsible Agency</b>	<b>Dates of Planning and Implementation</b>
<b>Wofford Heights &amp; Alta Sierra Sub-Region</b>					
Alta Sierra (USFS Alta Sierra Phase 1)  <b>Maintenance Phase and Grant Proposal</b>	WH-1	Alta Sierra community developed area – an in-holding surrounded by USFS.  50 acres KRN 50 acres of USFS	The project is a shaded fuelbreak that surrounds the Alta Sierra community and was accomplished by thinning small trees, removing brush near cabins and along egress routes. Cuttings were chipped or burned in piles.	KRN, USFS  KRVFSC Grant Project  2012 KRVFSC grant proposal to SNC, 100 acres fuel break and chipper support	Completed in 2005.  KRN maintained private property portion during 2008.  2010 special grant WH-9 funded KRN maintenance.  USFS needs to work on maintenance
Summit (Replaces USFS Alta Sierra Phase 2)  <b>Out Year Project</b>	WH-2	On USFS around the Alta Sierra community area.  Contains some sensitive wildlife habitat and drainages so was not included in Ice. Also known as ‘Land between the Ice’.  Acreage to be determined.	The project is designed to create shaded fuel breaks adjacent to private property by connecting the Ice project's units together into more continuous treatment areas.	USFS	Expected NEPA 2014, implementation 2015
Ice / - Ice Thinning - Ice Prescribed Burning	WH-3	The project covers a large area around Alta Sierra 5000 acres of USFS CND	Ice thinning involves thinning the forest stands to bring them into desired structural condition.	USFS, CND	USFS NEPA was completed in 1998 but had a court injunction finally lifted in 2011. Work resumed in 2011

<b>Project Name And Status</b>	<b>Map Key</b>	<b>Project Location and Size</b>	<b>Type of Project</b>	<b>Responsible Agency</b>	<b>Dates of Planning and Implementation</b>
<b>USFS NEPA and Implementation Phases</b>			Ice prescribed burning will reduce hazardous fuels in the forest stands after the thinning is completed.		including timber harvest, piling and burning.
<b>Hungry Gulch Maintenance Phase</b>	WH-4	<p>Fuel reduction along primarily roads, and fuel reduction along north, west, and south private and BLM-CND boundary – 5 acres.</p> <p>BLM reduced fuels that are on BLM land within 100 feet of adjacent structures to meet State of CA vegetation clearance guidelines.</p> <p>KRN completed defensible space fuelbreaks on private property in 2006 – 27 acres.</p>	<p>Fuels reduction along the road system, 30’ from centerline.</p> <p>Primary disposal of cut fuels was to chip as cut. Cut/pile/burn those fuels inaccessible to chipping.</p>	<p>KRN, CND</p> <p>KRVFSC Grant Project</p> <p>2012 KRVFSC maintenance grant project</p>	<p>KRN completed private in 2006 and maintained in 2008.</p> <p>CND completed in 2008.</p> <p>2012 maintenance grant project</p>
<b>Sawmill (Lake Isabella Highlands) (Willow Flat) Maintenance Phase</b>	WH-5	<p>Roadside brushing along primary roads</p> <p>2.25 miles KRN - 26 acres</p> <p>1.20 miles CND - 14 acres</p>	<p>Fuels reduction along the road system 30’ from centerline.</p> <p>CND road brushing west of community and east of</p>	<p>KRN, CND</p> <p>2003 KRVFSC Grant Project</p> <p>2012 KRVFSC</p>	<p>Completed 2004.</p> <p>2012 maintenance grant project.</p>



Project Name And Status	Map Key	Project Location and Size	Type of Project	Responsible Agency	Dates of Planning and Implementation
		Fuels reduction down slope from structures.	the community to HWY 155.  Fuels reduction below structures was 80-90% in treated areas.	maintenance grant project	
<p>CND Wagy Flat</p> <p><b>Maintenance and Implementation Phases</b></p>	WH-6	<p>Adjacent to Sawmill Road west of Isabella Highlands subdivision running west to the Wagy Flat community. Adjacent to Trailblazer Jeep Trail and ridgeline fuelbreak east of Wagy Flat. Adjacent to FS Road 25S02 on the western edge of Wagy Flat community. Area mastication treatment proposed between ridgeline fuelbreak and eastern edge of Wagy Flat community.</p> <p>CND 68 acres total</p>	<p>Roadside clearing within 50 feet of either side of roads/trails through chipping, mechanical mastication or pile/burn. Reduce fuels approximately 50% in area treatment with mechanical mastication.</p>	CND	<p>Sawmill Road, Trailblazer Jeep Trail and ridgeline fuelbreak completed 2004.</p> <p>West side of Wagy Flat project completed 2007 (8 acres).</p> <p>Needs maintenance</p> <p>New area treatment proposed for implementation in 2011 (28 acres).</p>
<p>Pala Ranches (Mountain Shadows)</p> <p><b>Maintenance and Implementation Phases</b></p>	WH-7	<p>Adjoining projects on the western edge of Wofford Heights community starting at Highway 155, continuing south along the western edge of the Pala Ranches community then continuing east to border homes in the Old State Road area.</p>	<p>A combination of shaded fuel breaks and reduction of heavy fuel concentrations in the gullies, drainages and other areas with high volume fuels. Adjoins and ties into completed and proposed projects on</p>	<p>KRN, CND</p> <p>KRN - Phase 1 KRVFSC grant project completed in 2009 – 57 acres.</p> <p>KRN - Phase 2 (Mountain Shadows)</p>	<p>Continuation of a project that was completed during late 1990's.</p> <p>CND RAWs project completed adjacent to and north of Highway 155 in 2006 – 8 acres.</p>

Project Name And Status	Map Key	Project Location and Size	Type of Project	Responsible Agency	Dates of Planning and Implementation
		<p>KRN 98 acres CND 21 acres</p> <p>This project is located just to the east of the end of the original Pala Ranches fuelbreak in the Ice / Tillie project (WH-3).</p> <p>Phase 1 = 57 acres.</p> <p>Phase 2 = 41 acres.</p>	adjacent BLM land.	<p>KRVFSC 2011 grant - 41 acres.</p> <p>Phase 1 maintenance - 2012 KRVFSC grant project</p> <p>CND has 2 phases in the project area.</p>	<p>Needs maintenance</p> <p>Phase 1 - Project just west of Pala Ranches was completed in 2009.</p> <p>Phase 1 - 2012 maintenance grant project.</p> <p>Ties into completed Pala Ranches fuelbreak.</p> <p>Phase 2 is being completed in 2012.</p> <p>CND has 13 acres to complete.</p>
<p>Dutch Flat</p> <p><b>Grant Proposal</b></p>	WH-8	Dutch Flat Road	Roadside clearing and improvement of defensible space, 40 to 50 acres tbd.	<p>KRN, CND</p> <p>2013 KRVFSC grant proposal</p>	To be completed 2014
<p>2010 Alta Sierra / Wofford Special Grant</p> <p><b>Implementation Phase</b></p>	WH-9, WH-10	<p>Brushing Highway 155 and Old State Roads, Alta Sierra fuelbreak and Greenhorn Mountain Park timber sale.</p> <p>125 acres roadside easement escape route brushing.</p> <p>60 acres Alta Sierra fuelbreak</p>	Maintenance of escape route roads, existing fuel break and cleanup of fuels in the Greenhorn Mountain Park timber sale area.	<p>KRN, USFS</p> <p>KRVFSC grant project. This was a special USFS grant for \$300,000 on non-federal lands for community protection made available during</p>	Implementation ongoing 2011-2013.

<b>Project Name And Status</b>	<b>Map Key</b>	<b>Project Location and Size</b>	<b>Type of Project</b>	<b>Responsible Agency</b>	<b>Dates of Planning and Implementation</b>
		<p>maintenance.</p> <p>80 acres of activity and natural fuels cleanup and disposal inside the Greenhorn Mountain Park.</p>		2010.	
<p>Slick Rock</p> <p><b>Out Year Project</b></p>	WH-11	<p>Along both sides of Highway 155 and around the Slick Rock recreation cabin areas west of Greenhorn Summit.</p> <p>Acreage to be determined.</p>	Shaded fuel break.	USFS	Expected NEPA completion and implementation dates 2015
<p>USFS Wagy Flat</p> <p><b>Out Year Project</b></p>	WH-12	<p>Along Forest Service boundary adjacent to private property at Wagy Flat.</p> <p>1000 acres of brush</p>	Shaded fuel break.	KRN, USFS	Expected NEPA completion and implementation dates 2015
<p>Alta Sierra Escape Route Phase I- Highway 155 West of Summit</p>	WH-13	<p>Highway 155 from Greenhorn Summit to western Forest Service boundary.</p> <p>\$27,000 RAC funding (up to \$47000 possible) from USFS to Kern County approved 2011.</p> <p>Acreage to be determined.</p>	Shaded fuel break along escape route roads.	KRN, CND USFS	Expected NEPA completion and implementation dates 2012-2014
<p>Alta Sierra Fuels Reduction Project (Alta Sierra Escape Route- Rancheria</p>	WH-14 (new project)	<p>Rancheria Road from Greenhorn Summit to Shirley Meadows.</p> <p>\$200,000 USFS funding</p>	Shaded fuel break along escape route roads.	KRN, USFS	Expected CEQA/NEPA completion and implementation dates

<b>Project Name And Status</b>	<b>Map Key</b>	<b>Project Location and Size</b>	<b>Type of Project</b>	<b>Responsible Agency</b>	<b>Dates of Planning and Implementation</b>
Road south of summit)		approved to Kern County  Acreage to be determined.			2012-2014
Greenhorn Mountain Park-USFS	WH-15 (new project)	Former Greenhorn Mountain County park transferred to USFS in 2008; north of State Highway 155  USFS-55 acres	Fuels treatment	USFS	NEPA 2013-2014 Implementation 2012-2013
Rancheria Forest Restoration Project	WH-16 (new project)	USFS 6000 acres of thinning and fuels treatment		USFS	NEPA 2012- Implementation 2012-2017
Red Mountain Thinning	WH-17	USFS 200-300 acres/year	Pile and burn, underburn	USFS	2005-2015; NEPA update 2011
<b>Kernville Sub-Region</b>					
Burma Extension  <b>Implementation Phase</b>	KV-1	Shaded fuelbreak along Burlando Road area. Project ties directly to and extends project KV-5.  KRN – 35 acres	Shaded fuelbreak.	KRN  KRVFSC 2010 Grant Project	KRN completed implementation in 2011.  Review for maintenance 2012.
Plater Road  <b>Grant Proposal</b>	KV-2	Create defensible space through a chipping project in a community of 16 homes. The community is located between Kernville and Wofford Heights.  KRN – 8 acres CND - 5 acres	Thin existing vegetation among residences and brush the access roads to provide a safer route for property owners and emergency equipment.	KRN, CND  2013 KRVFSC grant proposal	To be completed 2014
Frontier Homes	KV-3	Road brushing with fuel break	Shaded fuelbreak.	KRN	Initial completion 2001.

<b>Project Name And Status</b>	<b>Map Key</b>	<b>Project Location and Size</b>	<b>Type of Project</b>	<b>Responsible Agency</b>	<b>Dates of Planning and Implementation</b>
<b>Maintenance Phase</b>		along both sides of Frontier Trail (North & South).  1.4 miles of road brushing with 21.7 acres total cut.			Maintenance completed 2011 as part of KV-1
Grandview  <b>Maintenance Phase</b>	KV-4	Fuel reduction behind developed lots in Kernville from Burlando Road, behind Greenleaf, to Grandview, to Spruce.  30 acres	Shaded fuelbreak.	KRN  Maintenance 2012 KRVFSC grant project	Initial completion 1994.  Maintenance 2006 and 2008.  2012 maintenance grant project.
Kernville/River Kern Hazardous Fuels Reduction  <b>Maintenance Phase</b>	KV-5	There are three units in this project:  The Burma unit is near Burma Road and is 30 acres in size. Burma ties directly into KV-1. The Bowman/Luxton unit surrounds the private property just north of the Kernville Airport and is 24 acres in size.  Riverkern 25 acres USFS  The Riverkern project is on the east side of Riverkern.	Shaded fuelbreak.	USFS	Work on the Riverkern unit has been in maintenance status since the late 1990's.  Burma and Bowman/Luxton units completed in 2007 and maintained annually. NEPA being updated 2012, combining USFS Kernville/Riverkern, projects
Rodgers Road Rodgers Road 2  <b>Maintenance Phase</b>	KV-6	Fuel reduction in drainage adjacent to Rodgers Road. Kernville.  4.8 Acres.	Shaded fuelbreak.	KRN  KRVFSC 2006 Grant Project	Rogers Road was completed in 2004.  Maintenance completed 2011 as part



<b>Project Name And Status</b>	<b>Map Key</b>	<b>Project Location and Size</b>	<b>Type of Project</b>	<b>Responsible Agency</b>	<b>Dates of Planning and Implementation</b>
					of KV-1
Tollefson  <b>Maintenance Phase</b>	KV-7	Fuels reduction to connect the Frontier Homes and Grandview fuel breaks.  4.2 acres.	Shaded fuelbreak.	KRN  Maintenance 2012 KRVFSC grant project	Completed 2001.  Maintenance completed in 2008.  2012 maintenance grant project.
<b>Lake Isabella Sub-Region</b>					
Bodfish Canyon  <b>Maintenance Phase</b>	LI-1	Along Bodfish Canyon Road, Eastern end of Butternut Drive, and Bodfish Creek Road, and West of Laurel Drive.  141 acres total KRN land, in 7 units.	Shaded fuelbreak.	KRN  KRVFSC 2007, 2008, 2010 Grant Projects  Phases 1 and 2 - 2012 KRVFSC maintenance grant projects	Phase 1 (32 ac) - Completed in 2008, 2012 maintenance grant project.  Phase 2 (40 ac) – 2008 Completed in 2009, 2012 maintenance grant project  Phase 3 (35 ac) – Completed 2011
Erskine  <b>Out Year Project</b>	LI-2	Part of Erskine Creek/Spring Gulch/Lynch Canyon Project.  Along Erskine Creek Road, from 1.25 miles South East of Kern Valley High School to junction with Spring Gulch 4x4 Road.  Total for this portion is 2.98	Shaded fuelbreak along the road system along riparian area.	KRN, CND	Outyear Project – will monitor road and when it becomes overgrown project will be scheduled for implementation.

<b>Project Name And Status</b>	<b>Map Key</b>	<b>Project Location and Size</b>	<b>Type of Project</b>	<b>Responsible Agency</b>	<b>Dates of Planning and Implementation</b>
		<p>miles road work, 127 acres fuel break.</p> <p>KRN portion is 1.89 miles of road, and 76 acres of fuel break.</p> <p>CND portion is 1.2 miles of road and 51 acres of fuel break.</p> <p>Total project is 110 acres private (KRN), and 125 acres CND.</p> <p>Road work is 3.79 miles on CND, 3.14 miles on KRN.</p>			
<p>Lynch Canyon</p> <p><b>Out Year Project</b></p>	<p>LI-3</p>	<p>This section is from Squirrel Valley south up Lynch Canyon Rd. (dirt) to the Spring Gulch Pass.</p> <p>Ties into LI-2.</p> <p>Total size is 2.29 miles road, and 61 acres of fuelbreak.</p>	<p>Roadside shaded fuel break to facilitate fire suppression.</p> <p>Fuel Break varies in width from 50' to 300'.</p>	<p>KRN, CND</p> <p>KRN portion is .88 miles of road, and 23 acres of Fuel Break.</p> <p>CND portion is 1.41 miles of road and 38 acres of Fuel Break.</p> <p>Total project is 110 acres private (KRN), and 125 acres CND.</p> <p>Road work is 3.79 miles on CND, 3.14 miles on KRN.</p>	<p>Originally implemented in 1990's.</p> <p>Outyear Project.</p>
<p>Meyers Canyon</p> <p><b>Maintenance Phase</b></p>	<p>LI-4</p>	<p>Meyers Canyon near Bodfish Canyon.</p> <p>2 Miles road brushing along primary roads.</p> <p>20.9 acres of shaded fuel break</p>	<p>Shaded fuelbreak.</p>	<p>KRN</p> <p>KRVFSC 2004 Grant Project</p> <p>All the road brushing and 13.3 acres of the</p>	<p>Project completed 2005.</p> <p>2012 maintenance grant project.</p>

<b>Project Name And Status</b>	<b>Map Key</b>	<b>Project Location and Size</b>	<b>Type of Project</b>	<b>Responsible Agency</b>	<b>Dates of Planning and Implementation</b>
		along drainage west of structures.		shaded fuel break was funded by a KRVFSC grant. The remainder and maintenance was direct KRN funding.  Maintenance 2012 KRVFSC grant project	
Squirrel Valley <b>Maintenance Phase</b>	LI-5	Fuels reduction along fence line West of Squirrel Valley.  26 acres existing shaded fuels break.  22 acres proposed addition. A single blade dozer line is put in along the fuel break from Cook Peak Road on the South to Hwy 178 on an occasional basis.	Shaded fuel break.	KRN	Completed 1999.  Maintained in 2008.
Yankee Canyon <b>Out Year Project</b>	LI-6	In Yankee Canyon Subdivision.  7 to 15 acres.	Roadside clearing and escape route improvement.	KRN, CND	Outyear Project.
Lakeland Estates (Lake Isabella Community Defense Zone) <b>Implementation Phase</b>	LI-7	Fuel break in back yards along the east side of Lake Isabella.  30 to 50 acres.	Shaded fuel break.	KRN  KRVFSC 2011 Grant Project	To be completed in 2012.

<b>East Valley Sub-Region</b>					
Jacks <b>Out Year Project</b>	EV-1	USFS land bordering the private property in Walker Pass subdivision in Jacks Creek Area.	Shaded fuelbreak adjacent to structures.	USFS	Expected NEPA completion and implementation 2016
Walker Pass <b>Implementation Phase</b>	EV-2	Roadside clearing on BLM land along 0.6 mile adjacent to Highway 178.  CND - 8 acres	Reduce fuel loading within 50 feet of each side of Highway 178 through cut and chip. Fell hazard trees from roadside fire & chip branches.	CND	Approximately 75% of project complete 2008. Triangle section scheduled for 2011.
Walker Pass Subdivision <b>Grant Proposal</b>	EV-3	Roadside clearing along roads within the subdivision and along Highway 178 on private land.  KRN - 10 acres	Roadside Clearing	KRN  2013 KRVFSC grant proposal	To be completed 2014.
Fay Ranch <b>Out Year Project</b>	EV-4	Along Fay Ranch Road.  KRN - 35 acres	Roadside Clearing	KRN	Outyear Project. Environmental compliance issues – CEQA.
<b>Kennedy Meadows Sub-Region</b>					
Kennedy Meadows <b>Maintenance Phase</b>	KM-1	34.5 total acres being evaluated as of 11/16/2006.	Clear fuel along 12 miles of roads in Kennedy Meadows including 5 miles of Kennedy Meadows Road. Brush will be removed 20 feet or more from the road	KRVFSC, KMPOA  KRVFSC 2008 Grant Project	Completed in 2008.  Review for maintenance in 2012.

			and lower tree limbs would be removed.		
BLM Kennedy Meadows Roadside  <b>Maintenance Phase</b>	KM-2	Roadside treatment in three section that border BLM land. 5 acres	Clear brush within 20 feet of roads on BLM land	CND	Completed 2007.  Review for maintenance in 2012.
<b>Piutes &amp; Kelso Valley Sub-Region</b>					
Valley View  <b>Implementation Phase</b>	P/K-1	Defensible space zone immediately around and adjacent to the Valley View private property in-holding located in the Piute Mountains.  73 acres of USFS.	Shaded fuel break adjacent to private property.	USFS	NEPA was completed in 2010. USFS will begin implementation in 2011, complete by 2012.
Valley View  <b>Out Year Project</b>	P/K-2	Defensible space zone immediately on the Valley View private property in-holding located in the Piute Mountains. 25 acres Private property  Out year project is for work to be completed on private lands.	Shaded fuel break on private property.	KRN	Out year KRVFSC grant project is for work to be completed on private lands.
<b>Havilah &amp; Walker Basin Sub-Region</b>					
Piute Meadows Community Escape Route  <b>Maintenance Phase and Out Year</b>	H/WB-1	Phase 1 - Adjacent to roads in Piute Meadows Community. 5 miles of road for approximately 25 acres.  Phase 2 – Adjacent to	Phase 1 - Reduce fuels within 20 feet of each side of arterial roads within community to provide safe access and escape routes.	KRN, CND  Phase 1 2009 KRVFSC grant project	Phase 1 - implemented in 2009.  Phase 2 – Outyear Project



<b>Project</b>		Caliente/Bodfish Road and other roads within subdivision. Also includes fuelbreak on BLM land north of subdivision to connect to Breckenridge Road. (10 acres BLM)	Phase 2 – Roadside clearing and fuelbreaks		
Dutchman <b>Out Year Project</b>	H/WB-2	Dutchman Ridge area on east side of Breckenridge Mountain.	Roadside shaded fuelbreak	CND, KRN, USFS  Private property portion would be a KRVFSC grant proposal.	USFS 2016 Project
Red Mountain Subdivision <b>Out Year Project</b>	H/WB-3	Red Mountain Subdivision – north of Walker Basin.	Improve defensible space in community area and improve escape routes.	KRN, USFS, CND  Private property portion would be a KRVFSC grant proposal.	USFS 2016 Project
<b>Kern Canyon &amp; Breckenridge Sub-Region</b>					
Breckenridge Subdivision  <b>NEPA complete for plantation thinning</b>  <b>Breckenridge Forest in NEPA Phase</b>	KC/B-1	Defensible space zone immediately around and adjacent to the Breckenridge Subdivision.  1,000 acres plantation thinning 1,000 forest health thinning and hazardous fuels reduction	Shaded fuelbreak.  The project proposal involves a defensible space, hazardous fuels reduction project around about 15 Breckenridge Subdivision private parcels.  Hazardous fuels reduction will be accomplished by thinning small trees in some dense	USFS	Implementation of plantation thinning is planned to start in 2011. Additional treatment 2012-2015



### 2013 Grant Cycle and Project Priority

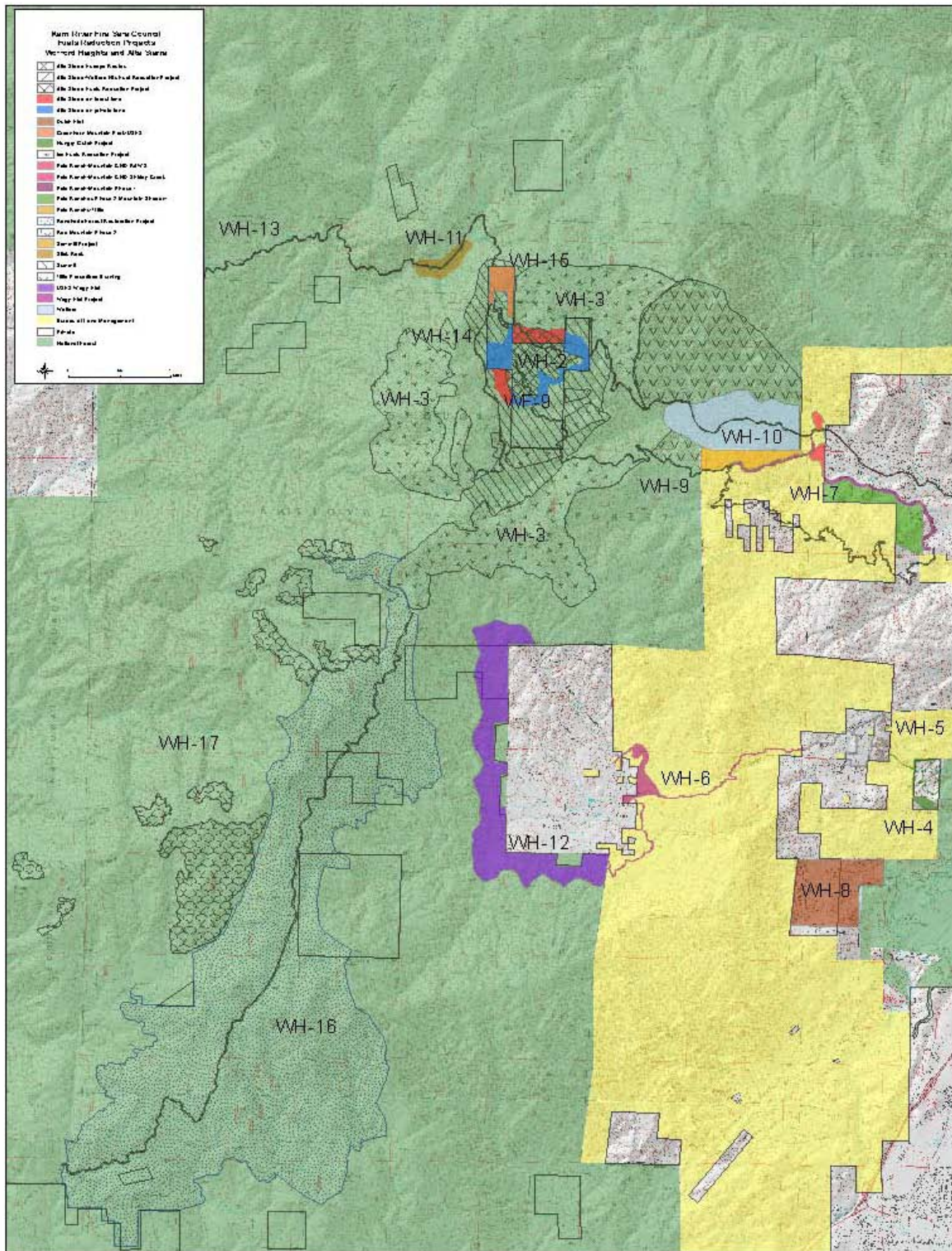
The following ranking methodology was used by the collaboration group for prioritizing 2013 grant proposals and out year projects.

1. Feasible to complete project within Grant Timeline? - 0 to 5
2. Are hazardous fuels being reduced? - 0 to 5
3. Community "Participation" and involvement (are they doing their defensible space, chipper days, etc.?) - 0-7
4. Project is located in the Wildland-Urban Interface? - 0 to 5
5. Can maintenance be continued in the future? (roadside brushing, fuelbreak, etc.?) a responsibility of homeowners/FSC etc. (KCFD is key) - 0 to 5
6. Are public lands adjacent to the project? (BLM, FS, USF&WL, NP etc.) - 0 to 5
7. Risk to Values? - 0-8

Priority	Name	Map Region	1	2	3	4	5	6	7	Score
1	Plater Road	KV-2	5	5	7	5	5	5	5	37
1	Walker	EV-2	5	5	7	5	5	5	5	37
1	Dutch Flat	WH-8	5	5	7	5	5	5	5	37
4	Yankee	LI-6	5	5	3	5	5	5	5	33
5	Piute Meadows Community	H/WB-1	5	5	2	5	5	5	5	32
6	Valley View	P/K-2	3	5	7	5	2	5	4	31
	Fay Ranch	EV-4								Not Scored
	Red Mountain	H/WB-3								Not Scored
	Lynch	LI-3								Not Scored
	Erskine	LI-2								Not Scored
	Dutchman	H/WB-2								Not Scored
	Wagy Flat	WH-12								Not Scored

## Fuel Reduction Project Sub Region Maps

<b>Title</b>	<b>Description</b>	<b>Designation</b>
Wofford Heights and Alta Sierra Sub-Region	General Project Vicinity	WH-1 to WH-17
Completed Projects	2011 Project	WH-7
Current Projects		WH-3, WH-4, WH-5, WH-6, WH-7,WH-9, WH-10, WH-16, and WH-17
Outyear Projects		WH-2, WH-8, WH-11, WH-12, WH-13, WH-14, and WH-15
Kernville Sub-Region	General Project Vicinity	KV-1 to KV-7
Lake Isabella Sub-Region	General Project Vicinity	LI-1 to LI-7
Lake Isabella Community Defense Zone	2011 Project	LI-7
East Valley Sub-Region	General Project Vicinity	EV-1 to EV-4
Fay Canyon	General Project Vicinity	EV-4
Walker Pass	General Project Vicinity	EV-1, 2, & 3
Kennedy Meadows Sub-Region	General Project Vicinity	KM- 1 to KM-2
Piutes & Kelso Valley Sub-Region	General Project Vicinity	P/K-1 to P/K-2
Havilah & Walker Basin Sub-Region	General Project Vicinity	H/WB-1 to H/WB-3
Kern Canyon and Breckenridge Sub-Region	General Project Vicinity	KC/B-1
Loraine Sub-Region	No projects Identified	



Wofford Heights and Alta Sierra Sub-Region

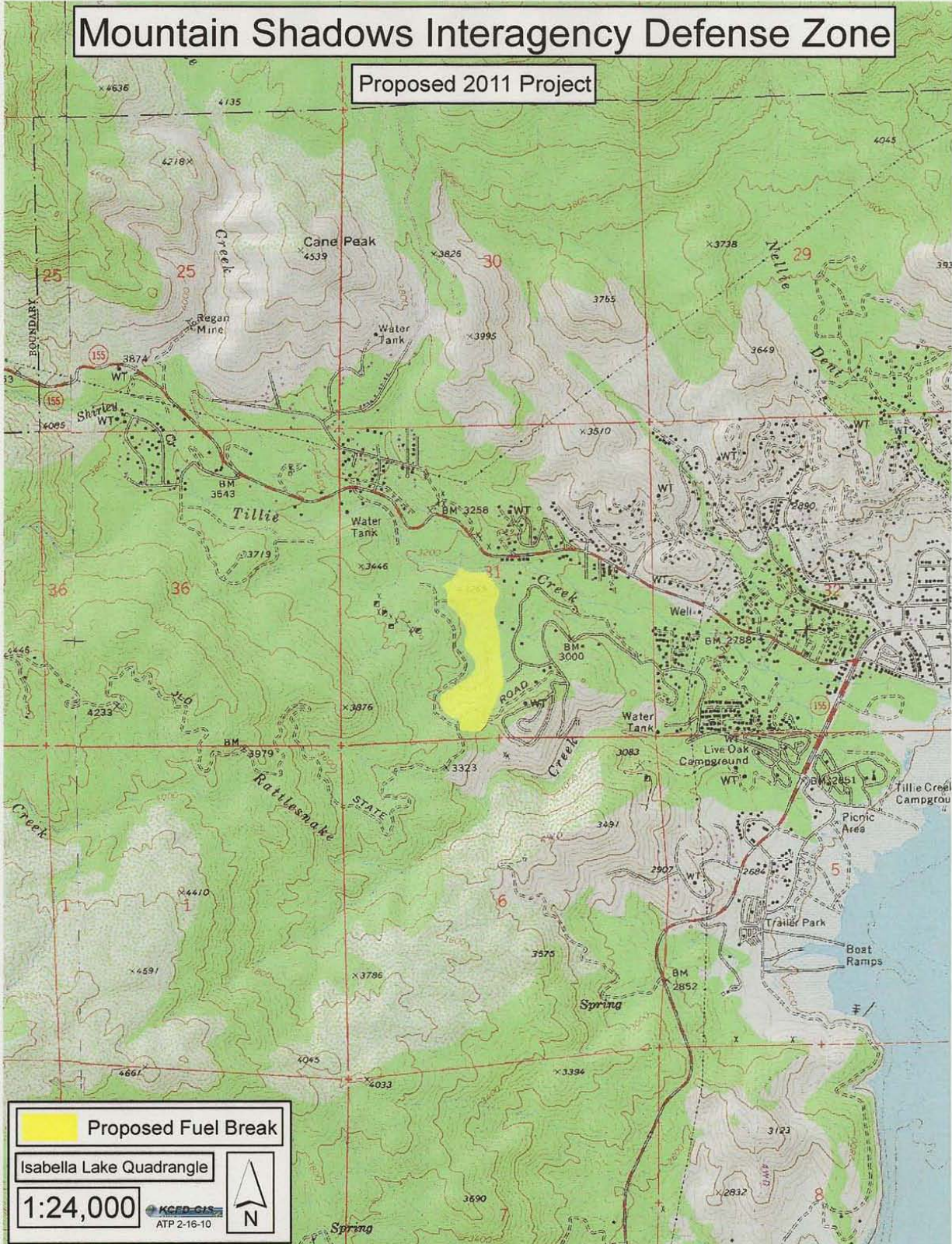






# Mountain Shadows Interagency Defense Zone

Proposed 2011 Project

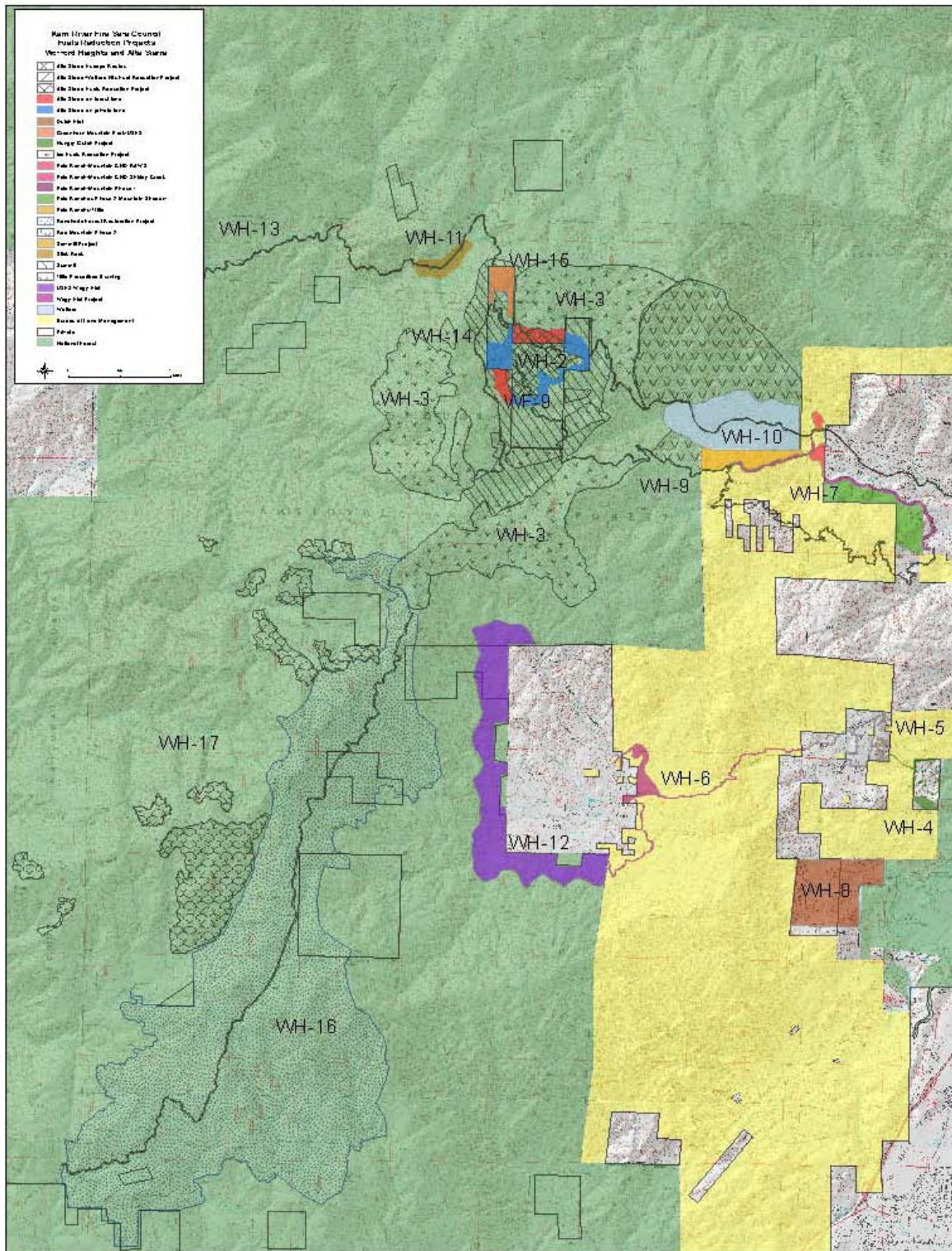


Mountain Shadows Interagency Defense Zone Project (WH-7)



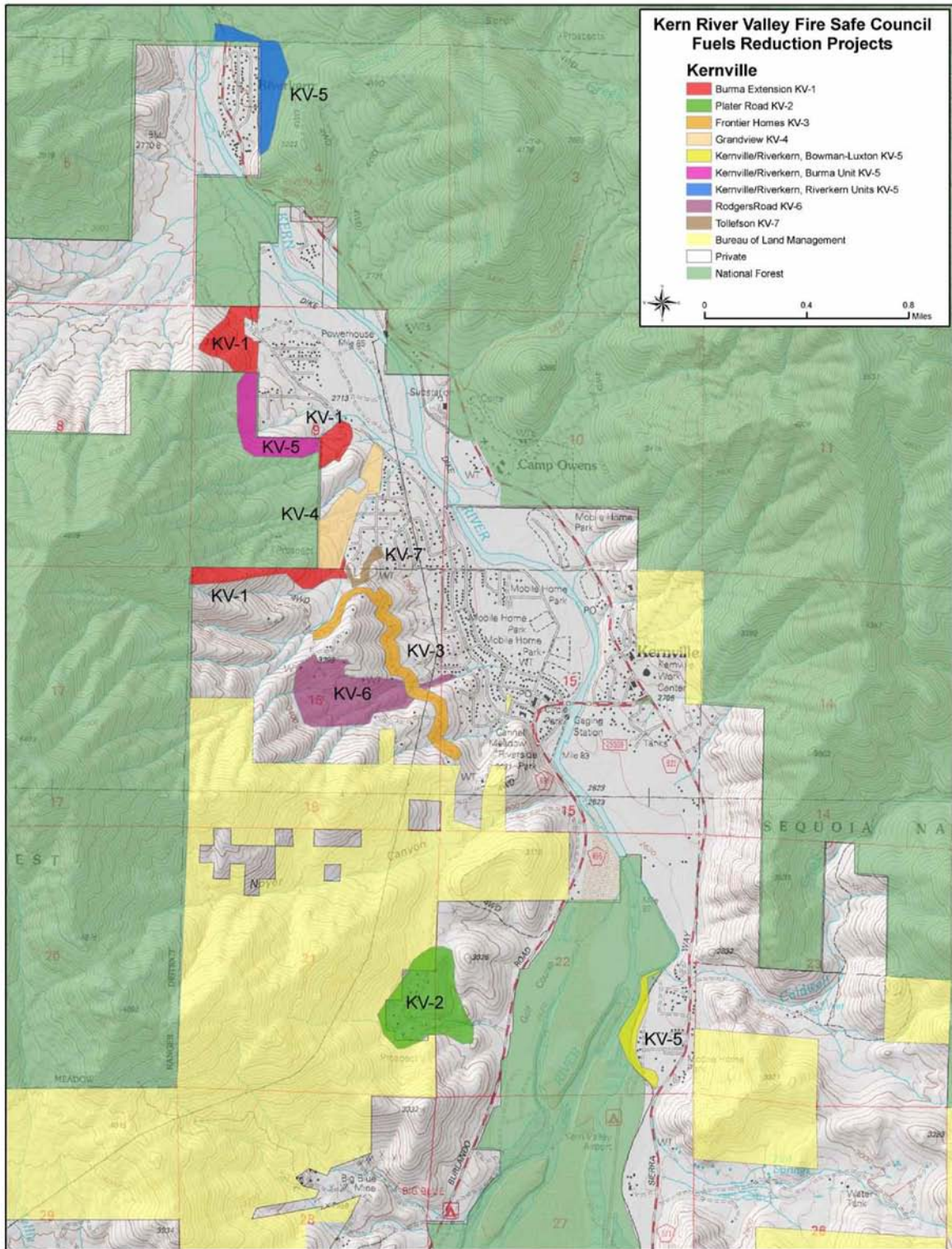






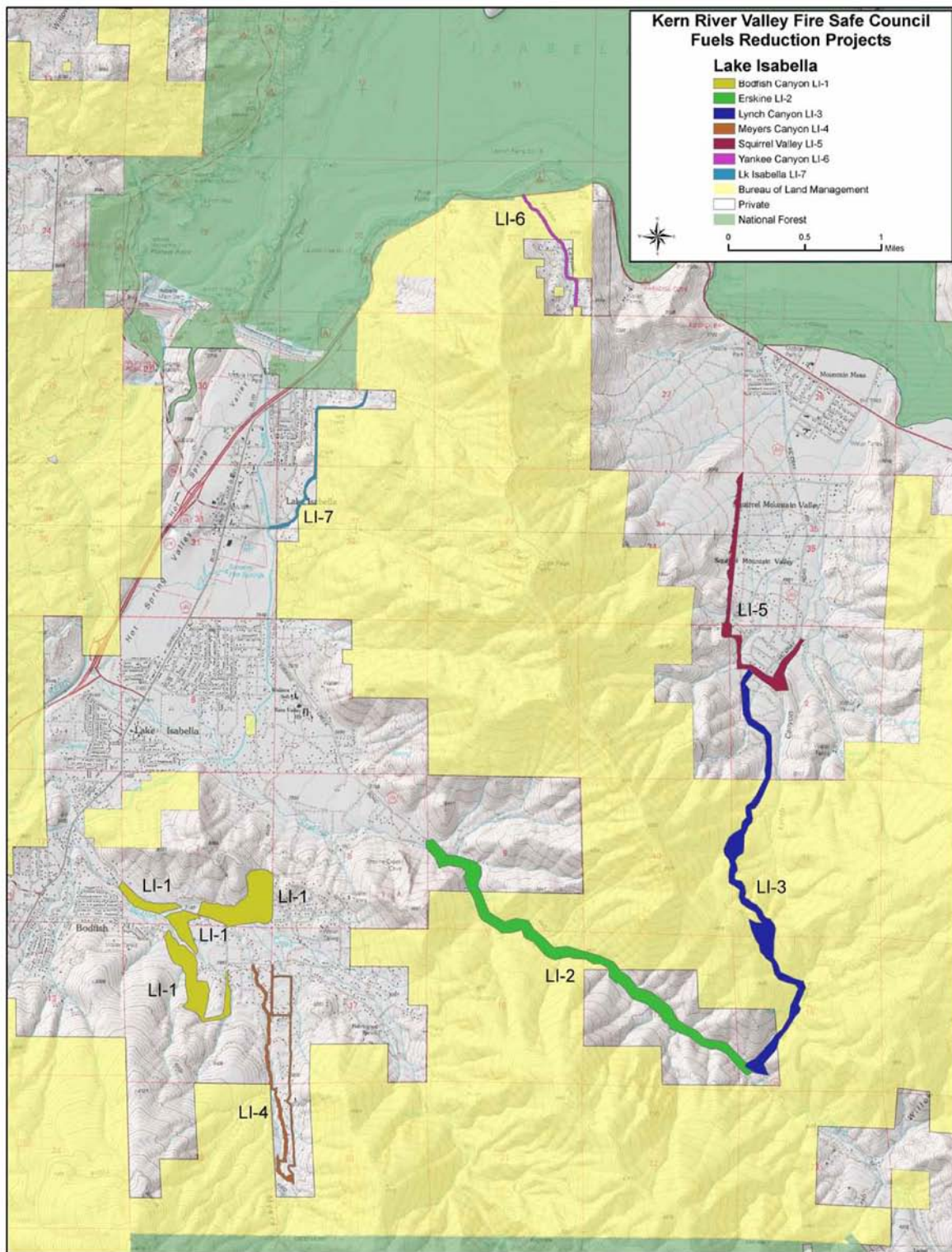
Wofford Heights and Alta Sierra Outyear Projects





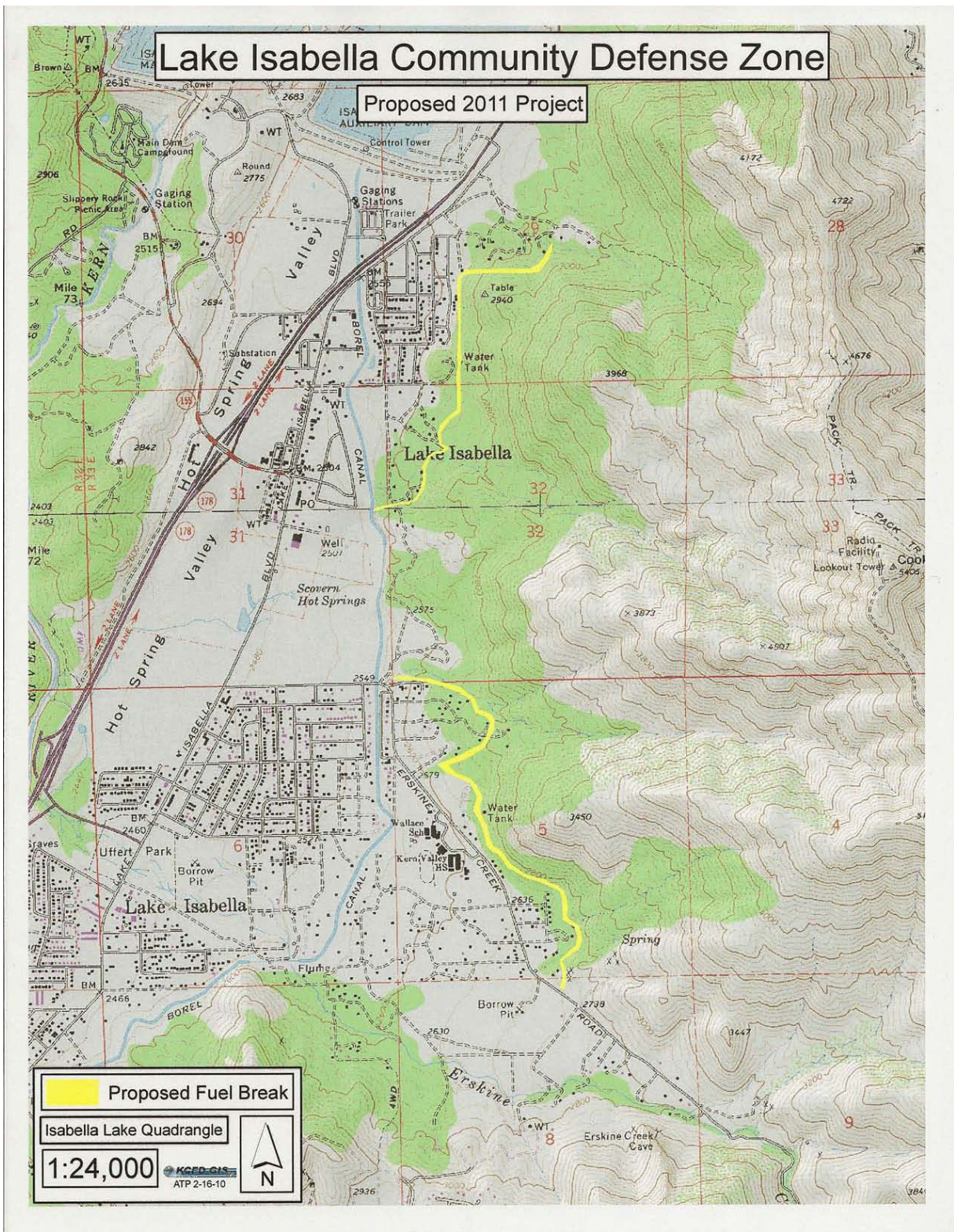
Kernville Sub-Region





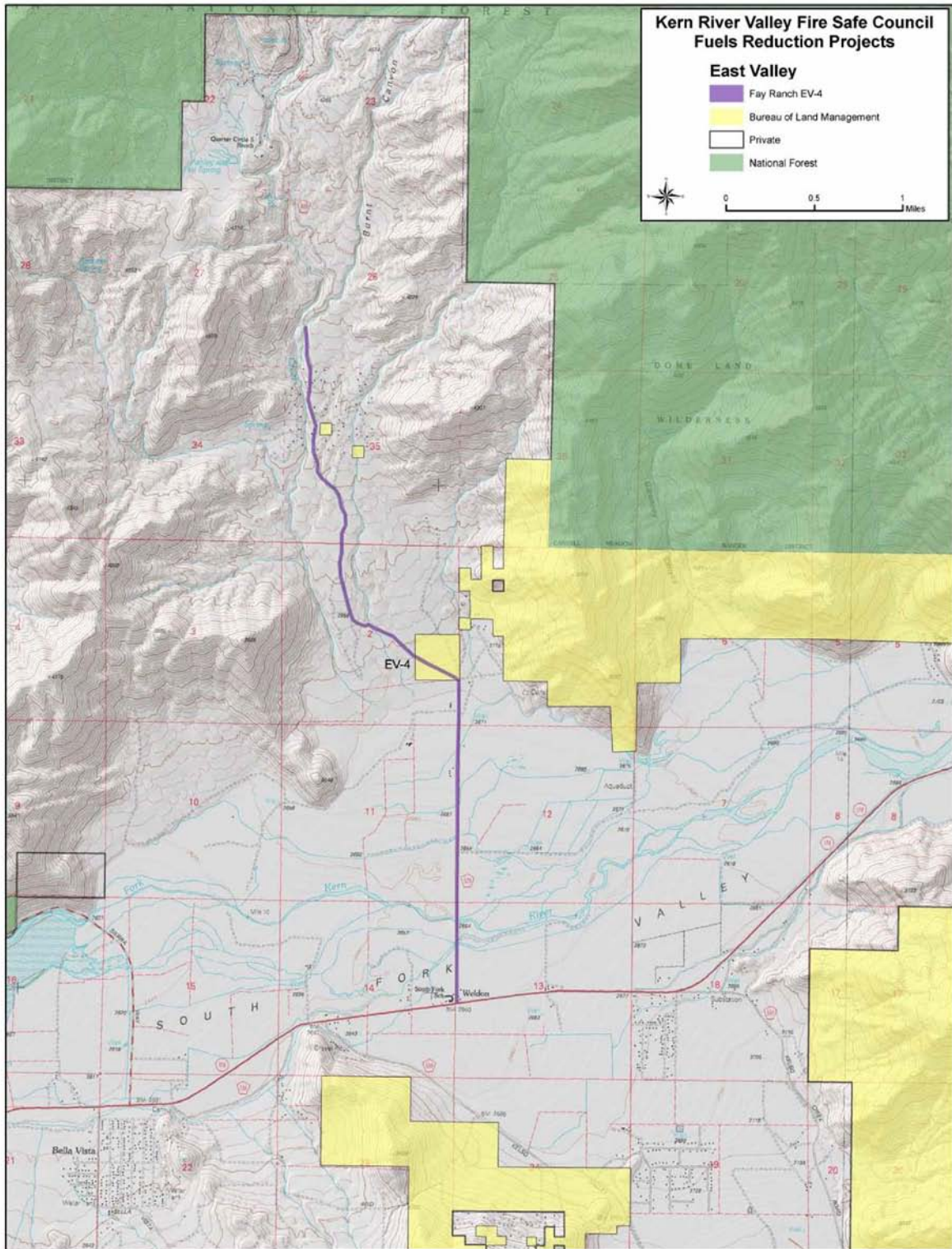
Lake Isabella Sub-Region





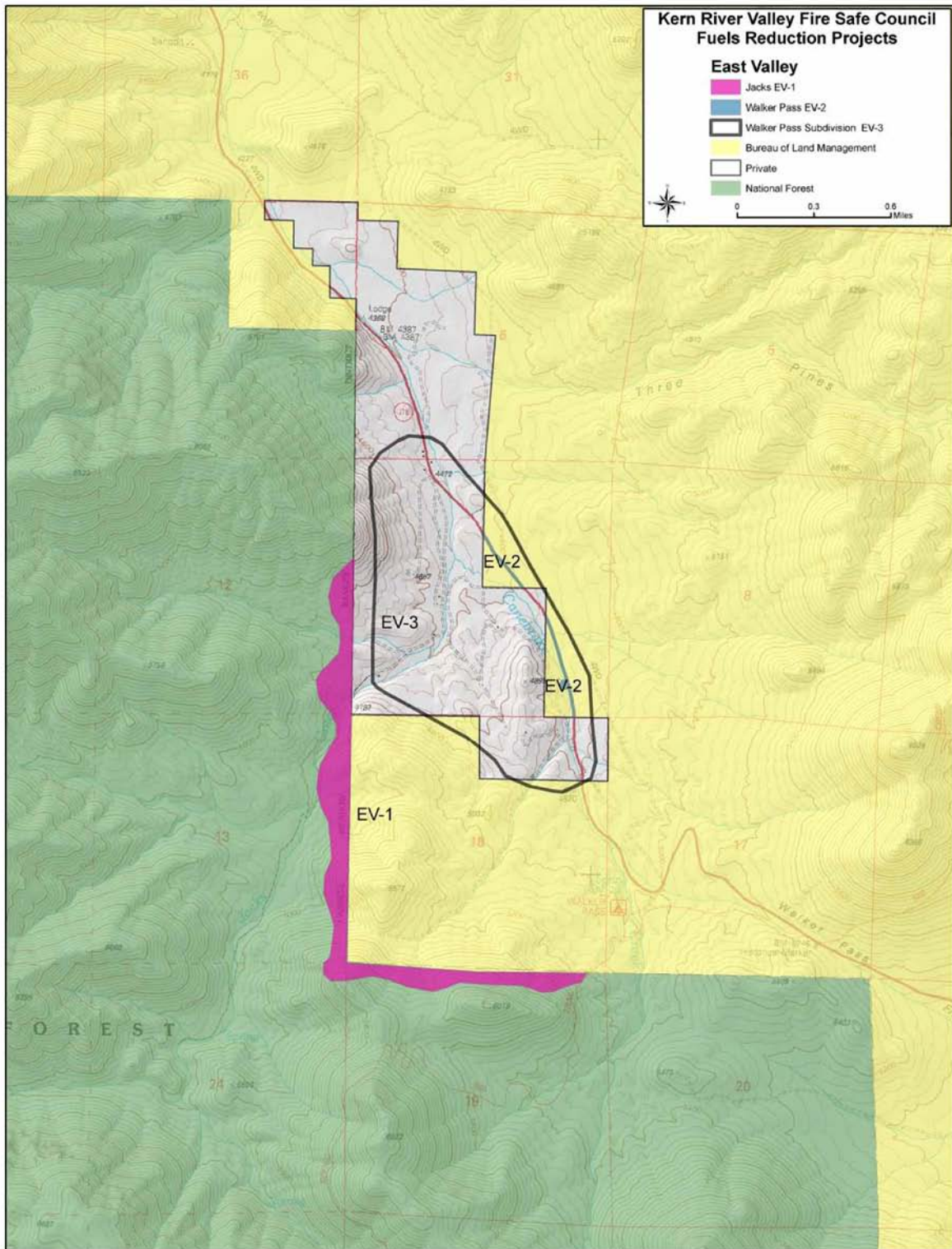
Lake Isabella Community Defense Zone (LI-7)





East Valley Sub-Region (EV-4)

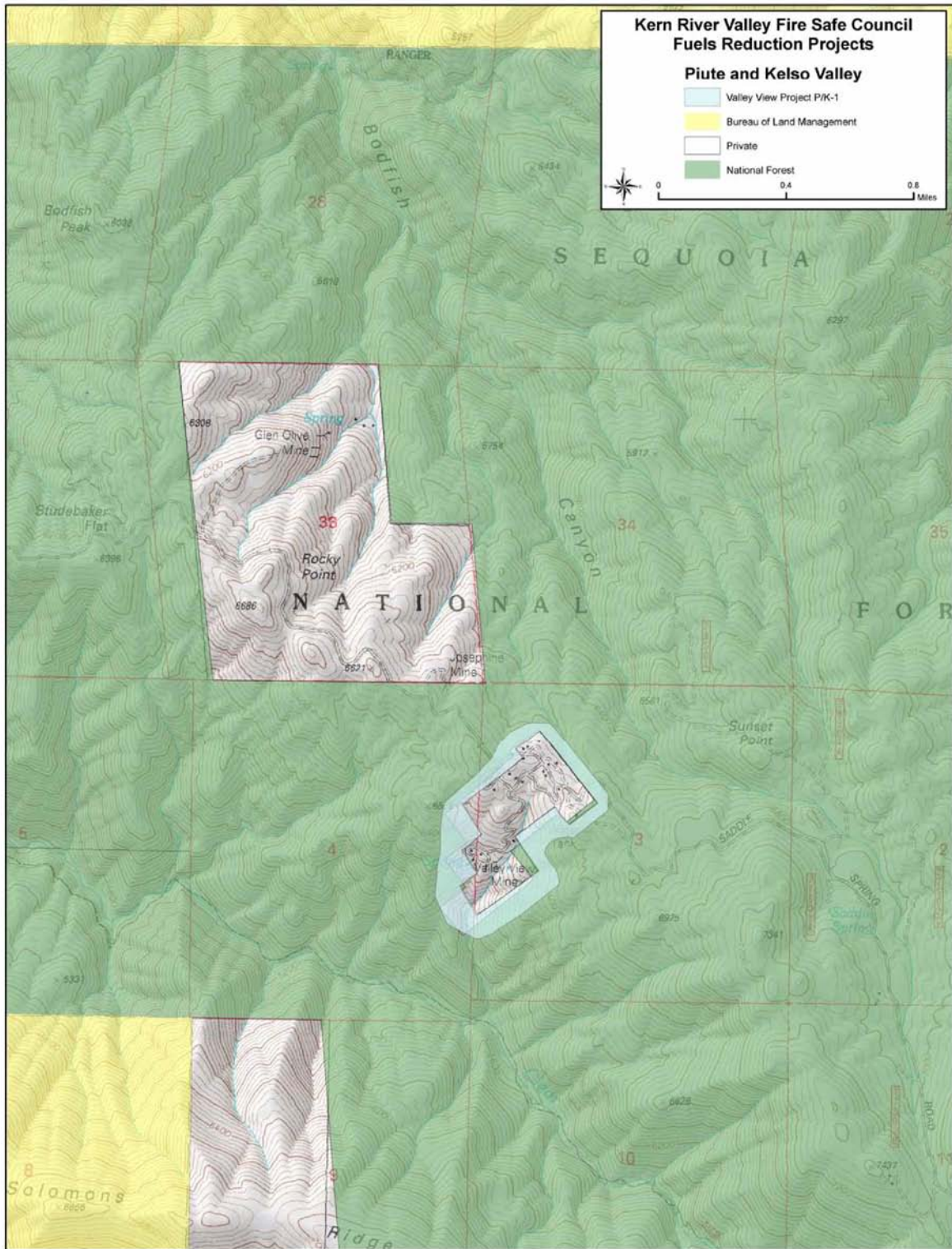




East Valley Sub-Region (EV-1, EV-2, and EV-3)

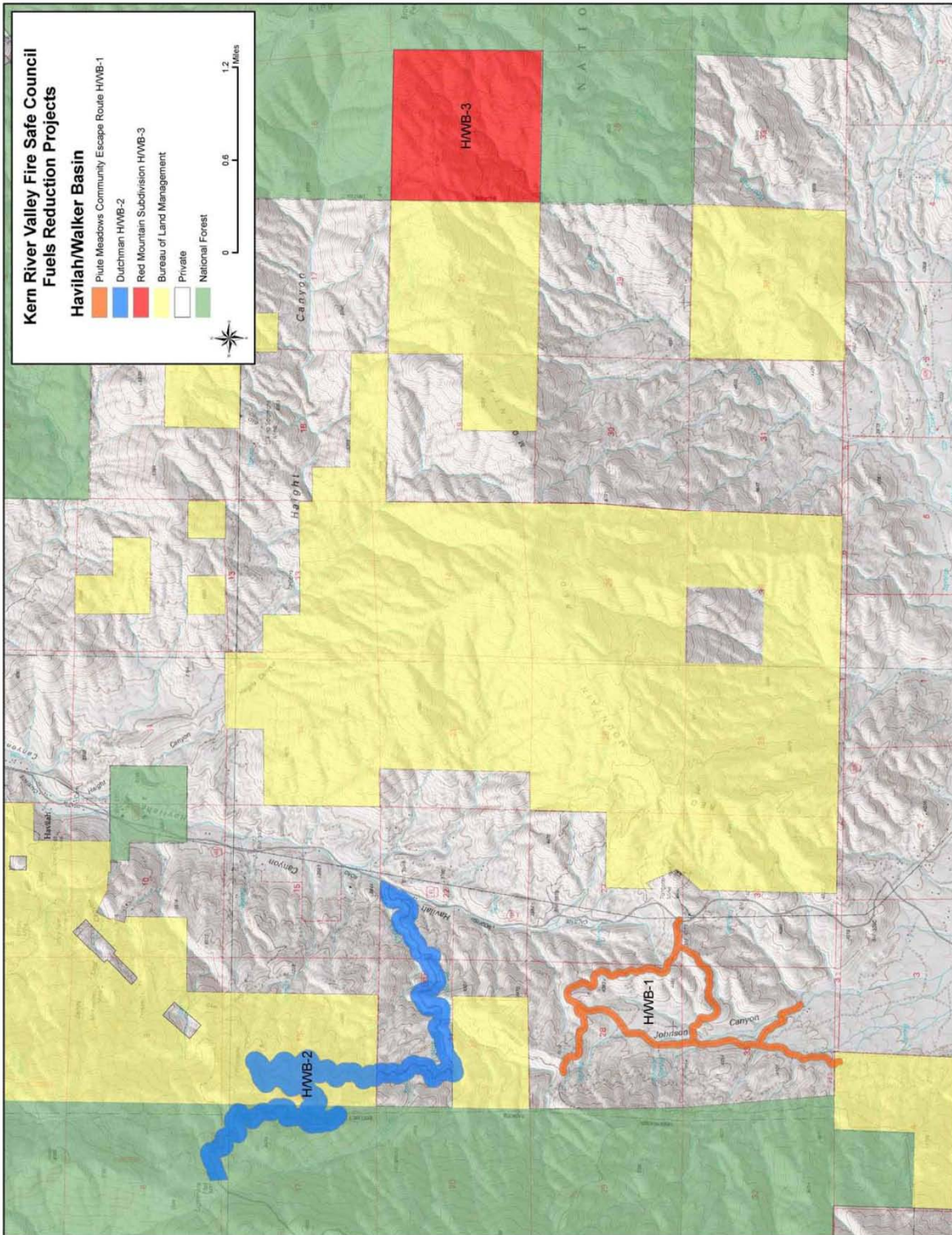




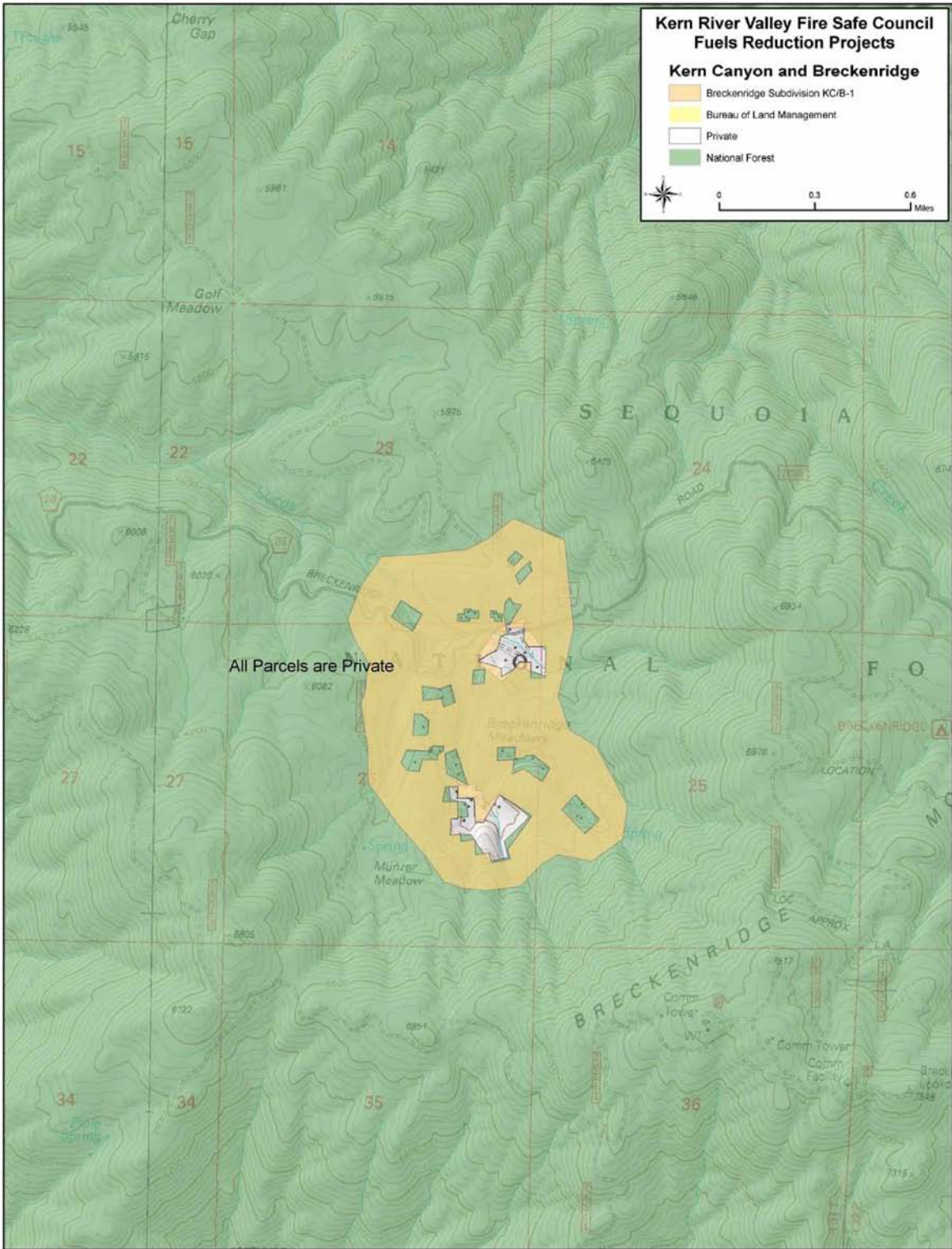


Piutes & Kelso Valley Sub-Region





Havilah & Walker Basin Sub-Region



Kern Canyon and Breckenridge Sub-Region