

KERN RIVER VALLEY

Fuel Reduction Projects



January 2013

Collaboration Group Charter

Issues

The Kern River Valley and Kern Plateau areas (areas) in Tulare and Kern Counties have four government agencies and one non-government group responsible for community fire protection and hazardous fuels management.

- Kern River Valley Fire Safe Council (KRVFSC) – Including the Kennedy Meadows area
- Tulare County Fire Department
- Kern County Fire Department
- DOI Bureau of Land Management – Bakersfield Field Office
- USDA Forest Service – Sequoia National Forest
- The areas have a significant history of damaging wildfires and will continue to experience damaging, fast spreading and high intensity wildfires into the foreseeable future.
- Long range fuels management and community protection planning must be coordinated between the government agencies and the Kern River Valley Fire Safe Council.
- Federal and state law and policies prescribe a collaborative approach to community wildfire protection that is driven by the affected communities.

Purpose

The purpose of the collaboration group (group) is to work under the auspices of the Kern River Valley Fire Safe Council to:

- Share and review community threat and hazardous fuels analysis and existing plans. Work to improve integration and consistency of analysis and planning. The Southern Sierra Geographic Information Cooperative and FIRESHED may be useful to help with improving analysis capabilities.
- Review, develop and implement long-range community protection and hazardous fuels management strategies for areas that need cross-jurisdictional boundary, integrated coordination.
- Develop cooperative projects and establish project priorities.
- The intent of the group is not to interfere with or compromise agency specific planning and projects but rather to promote community based cooperation and collaboration.
- The group does not interfere with or influence CEQA or NEPA planning or decisions. The group's intent is to develop project proposals and work to build consensus about project priorities that will be implemented by the agencies and the KRVFSC, based on their respective legal and policy directions.

Process

- The group is chartered by the Kern River Valley Fire Safe Council Board of Directors (Board). The Board oversees and directs group work.
- The group will meet on an ad-hoc, as needed basis. Representatives should assign an alternate to attend meetings if they have a conflict.
- The group will select a chairperson annually at the beginning of the new-year.
- The group will provide meeting notes to the Board that documents group work and recommendations to the Board.
- The group will work to build consensus, but consensus may not be attained because of conflicting or unrelated agency policies.
- The Board may modify this charter at any time.

Members

The group is comprised of representatives from each of the following:

- Kern River Valley Fire Safe Council – Richard Olson, Ed Royce
- Tulare County Fire Department – Phil Brown
- Kern County Fire Department – John Smith
- USDI Bureau of Land Management – Bakersfield Field Office – Kevin Chambers (Dave Brinsfield)
- USDA Forest Service – Sequoia National Forest – Scott Williams

Kern River Valley Fuel Reduction Projects

Project Name	Map Key
Wofford Heights & Alta Sierra Sub-Region	
Alta Sierra Fuelbreak (USFS Alta Sierra Phase 1)	WH-1
Summit	WH-2
Ice/Tillie Ice Thinning Ice Prescribed Burning Tillie Prescribed Burning	WH-3
Hungry Gulch	WH-4
Sawmill (Lake Isabella Highlands) (Willow Flat)	WH-5
CND Wagy Flat	WH-6
Pala Ranches (Phase 1) Mountain Shadows (Phase 2)	WH-7
Dutch Flat	WH-8
Alta Sierra and Wofford Heights Fuel Reduction Project	WH-9
Wofford	WH-10
Slick Rock	WH-11
USFS Wagy Flat	WH-12
Alta Sierra Escape Routes	WH-13
Alta Sierra Fuels Reduction Project	WH-14
Green Mountain Park-USFS	WH-15
Rancheria Forest Restoration	WH-16
Red Mountain Thinning	WH-17
Camp Yenis Hante Defensible Space	WH-18
Kernville Sub-Region	
Burma Extension	KV-1
Plater Road	KV-2
Frontier Homes	KV-3
Grandview	KV-4
Kernville/River Kern Hazard Fuels Reduction	KV-5
Rodgers Road Rodgers Road 2	KV-6
Tollefson	KV-7
Lake Isabella Sub-Region	
Bodfish Canyon	LI-1
Erskine	LI-2
Lynch Canyon	LI-3
Meyers Canyon	LI-4
Squirrel Valley	LI-5

Yankee Canyon	LI-6
Lake Isabella	LI-7
East Valley Sub-Region	
Jacks	EV-1
Walker Pass	EV-2
Walker Pass Subdivision	EV-3
Fay Ranch	EV-4
Kennedy Meadows Sub-Region	
Kennedy Meadows	KM-1
BLM Kennedy Meadows Roadside	KM-2
Piute & Kelso Valley Sub-Region	
Valley View	P/K-1
Valley View	P/K-2
Havilah & Walker Basin Sub-Region	
Piute Meadows Community Escape Route	H/WB-1
Dutchman	H/WB-2
Red Mountain Subdivision	H/WB-3
Kern Canyon & Breckenridge Sub-Region	
Breckenridge Subdivision	KC/B-1
Lorraine Sub-Region	
No projects identified to date	

CND – Bureau of Land Management, Bakersfield Office / [Central California Region Fire and Aviation Management Program](#)

CDD – Bureau of Land Management, California Desert District

KRVFSC – Kern River Valley Fire Safe Council

KRN – Kern County Fire Department

TCO – Tulare County Fire Department

USFS – United States Forest Service, Sequoia National Forest, Kern River Ranger District

EV = East Valley

H/WB = Havilah/Walker Basin

KM = Kennedy Meadows

KV = Kernville

KC/B = Kern Canyon & Breckenridge

LI = Lake Isabella

L = Lorraine

P/K = Piutes & Kelso Valley

WH = Wofford Heights & Alta Sierra

Implementation Phase – The project is being completed.

Maintenance Phase – All projects in shrub fuels need maintenance about every 2 years.

NEPA / CEQA Phase – The proposed project is going through the environmental compliance process.

Outyear Project – Outyear new KRVFSC grant proposal projects or new KRN/CND/USFS projects.

Projects Description – Updated November 17, 2011

Project Name And Status	Map Key	Project Location and Size	Type of Project	Responsible Agency	Dates of Planning and Implementation
Wofford Heights & Alta Sierra Sub-Region					
Alta Sierra (USFS Alta Sierra Phase 1) Maintenance Phase and Grant Proposal	WH-1	Alta Sierra community developed area – an in-holding surrounded by USFS. 50 acres KRN 50 acres of USFS	The project is a shaded fuelbreak that surrounds the Alta Sierra community and was accomplished by thinning small trees, removing brush near cabins and along egress routes. Cuttings were chipped or burned in piles.	KRN, USFS KRVFSC Grant Project	Completed in 2005. KRN maintained private property portion during 2008. 2010 special grant WH-9 funded KRN maintenance. USFS needs to work on maintenance
Summit (Replaces USFS Alta Sierra Phase 2) Out Year Project	WH-2	On USFS around the Alta Sierra community area. Contains some sensitive wildlife habitat and drainages so was not included in Ice. Also known as ‘Land between the Ice’. Acreage to be determined.	The project is designed to create shaded fuel breaks adjacent to private property by connecting the Ice project's units together into more continuous treatment areas.	USFS	Expected NEPA 2014, implementation 2015
Ice / - Ice Thinning - Ice Prescribed Burning	WH-3	The project covers a large area around Alta Sierra 5000 acres of USFS	Ice thinning involves thinning the forest stands to bring them into desired structural condition.	USFS	USFS NEPA was completed in 1998 but had a court injunction finally lifted in 2011. Work resumed in 2011

Project Name And Status	Map Key	Project Location and Size	Type of Project	Responsible Agency	Dates of Planning and Implementation
USFS NEPA and Implementation Phase			Ice prescribed burning will reduce hazardous fuels in the forest stands after the thinning is completed.		including timber harvest, piling and burning.
Hungry Gulch Maintenance Phase	WH-4	<p>Fuel reduction along primarily roads, and fuel reduction along north, west, and south private and BLM-CND boundary – 5 acres.</p> <p>BLM reduced fuels that are on BLM land within 100 feet of adjacent structures to meet State of CA vegetation clearance guidelines.</p> <p>KRN completed defensible space fuelbreaks on private property in 2006 – 27 acres.</p>	<p>Fuels reduction along the road system, 30’ from centerline.</p> <p>Primary disposal of cut fuels was to chip as cut. Cut/pile/burn those fuels inaccessible to chipping.</p>	<p>KRN, CND</p> <p>KRVFSC Grant Project</p> <p>2012 KRVFSC maintenance grant project</p>	<p>KRN completed private in 2006 and maintained in 2008.</p> <p>CND completed in 2008.</p> <p>2012 maintenance grant project</p>
Sawmill (Lake Isabella Highlands) (Willow Flat) Maintenance Phase	WH-5	<p>Roadside brushing along primary roads</p> <p>2.25 miles KRN - 26 acres 1.20 miles CND - 14 acres</p>	<p>Fuels reduction along the road system 30’ from centerline.</p> <p>CND road brushing west of community and east of</p>	<p>KRN, CND</p> <p>2003 KRVFSC Grant Project</p> <p>2012 KRVFSC</p>	<p>Completed 2004.</p> <p>2012 maintenance grant project.</p>

Project Name And Status	Map Key	Project Location and Size	Type of Project	Responsible Agency	Dates of Planning and Implementation
		Fuels reduction down slope from structures.	the community to HWY 155. Fuels reduction below structures was 80-90% in treated areas.	maintenance grant project	
CND Wagy Flat Maintenance Phase	WH-6	Adjacent to Sawmill Road west of Isabella Highland subdivision running west to the Wagy Flat community. Adjacent to Trailblazer Jeep Trail and ridgeline fuelbreak east of Wagy Flat. Adjacent to FS Road 25S02 on the western edge of Wagy Flat community. Area mastication treatment proposed between ridgeline fuelbreak and eastern edge of Wagy Flat community. CND 68 acres total	Roadside clearing within 50 feet of either side of roads/trails through chipping, mechanical mastication or pile/burn. Reduce fuels approximately 50% in area treatment with mechanical mastication.	CND	Sawmill Road, Trailblazer Jeep Trail and ridgeline fuelbreak completed 2004. West side of Wagy Flat project completed 2007 (8 acres). Maintaining ridgeline fuel break 2011 and 2012 NEPA completed for area mastication treatment: awaiting out year funding (2014).
Pala Ranches (Mountain Shadows) Maintenance and Implementation Phases	WH-7	Adjoining projects on the western edge of Wofford Heights community starting at Highway 155, continuing south along the western edge of the Pala Ranches community then continuing east to border homes in the Old State Road area.	A combination of shaded fuel breaks and reduction of heavy fuel concentrations in the gullies, drainages and other areas with high volume fuels. Adjoins and ties into completed and proposed projects on	KRN, CND KRN - Phase 1 KRVFSC grant project completed in 2009 – 57 acres. KRN - Phase 2 (Mountain Shadows)	Continuation of a project that was completed during late 1990's. CND RAWs project completed adjacent to and north of Highway 155 in 2006 – 8 acres.

Project Name And Status	Map Key	Project Location and Size	Type of Project	Responsible Agency	Dates of Planning and Implementation
		<p>KRN 98 acres CND 21 acres</p> <p>This project is located just to the east of the end of the original Pala Ranches fuelbreak in the Ice / Tillie project (WH-3).</p> <p>Phase 1 = 57 acres.</p> <p>Phase 2 = 41 acres.</p>	adjacent BLM land.	<p>KRVFSC 2011 grant - 41 acres.</p> <p>Phase 1 maintenance - 2012 KRVFSC grant project</p> <p>CND has 2 phases in the project area.</p>	<p>Needs maintenance</p> <p>Phase 1 - Project just west of Pala Ranches was completed in 2009.</p> <p>Phase 1 - 2012 maintenance grant project completed 2012</p> <p>Ties into completed Pala Ranches fuelbreak.</p> <p>Phase 2 is being completed in 2012.</p> <p>CND completed 13 acres 2010</p>
<p>Dutch Flat</p> <p>Grant Proposal</p>	WH-8	Dutch Flat Road	Roadside clearing and improvement of defensible space, 40 to 50 acres.	<p>KRN, CND</p> <p>KRVFSC grant proposal</p>	NEPA required (2014)
<p>2010 Alta Sierra / Wofford Special Grant</p> <p>Implementation Phase</p>	WH-9, WH-10	<p>Brushing Highway 155 and Old State Roads, Alta Sierra fuelbreak and Greenhorn Mountain Park timber sale.</p> <p>125 acres roadside easements escape route brushing.</p> <p>60 acres Alta Sierra fuel break</p>	Maintenance of escape route roads, existing fuel break and cleanup of fuels in the Greenhorn Mountain Park timber sale area.	<p>KRN, USFS</p> <p>KRVFSC grant project. This was a special USFS grant for \$300,000 on non-federal lands for community protection made available during</p>	<p>Implementation ongoing 2011-2013.</p> <p>80 acres of natural fuel cleanup in Greenhorn Mountain Park completed 2012</p>

Project Name And Status	Map Key	Project Location and Size	Type of Project	Responsible Agency	Dates of Planning and Implementation
		maintenance.		2010.	
Slick Rock Out Year Project	WH-11	Along both sides of Highway 155 and around the Slick Rock recreation cabin areas west of Greenhorn Summit. Acreage to be determined.	Shaded fuel break.	USFS	Expected NEPA completion and implementation dates 2015
USFS Waggy Flat Out Year Project	WH-12	Along Forest Service boundary adjacent to private property at Waggy Flat. 1000 acres of brush	Shaded fuel break.	KRN, USFS	Expected NEPA completion and implementation dates 2015
Alta Sierra Escape Route Phase I- Highway 155 West of Summit	WH-13	Highway 155 from Greenhorn Summit to western Forest Service boundary. \$27,000 RAC funding from USFS to Kern County approved 2011.	Shaded fuel break along escape route roads.	KRN, USFS	Expected NEPA completion and implementation dates 2012-2014
Alta Sierra Fuels Reduction Project (Alta Sierra Escape Route- Rancheria Road south of summit)	WH-14	Rancheria Road from Greenhorn Summit to Shirley Meadows. \$200,000 USFS funding approved to Kern County Brushing and clearing along 10 miles of road and community chipping	Shaded fuel break along escape route roads.	KRN, USFS	Expected CEQA/NEPA completion and implementation dates 2012-2014 Completed 30 days of community chipping in Alta Sierra during 2012

Project Name And Status	Map Key	Project Location and Size	Type of Project	Responsible Agency	Dates of Planning and Implementation
Greenhorn Mountain Park-USFS Out Year Project	WH-15	Former Greenhorn Mountain County park transferred to USFS in 2008; north of State Highway155 USFS-55 acres	Fuels treatment	USFS	NEPA 2013-2014
Rancheria Forest Restoration Project	WH-16 (new project)	USFS 6000 acres of thinning and fuels treatment		USFS	NEPA 2012- Implementation 2012-2017
Red Mountain Thinning	WH-17	USFS 200-300 acres/year	Pile and burn, under burn	USFS	2005-2015; NEPA update 2011
Camp Yenis Hante Defensible Space	WH-18	Create 17 acres of defensible space in Camp Yenis Hante. \$7,333 RAC funding from USFS to Kern County approved 2012	Fuel reduction and defensible space	KRN, USFS	Implementation dates 2013-2014
Kernville Sub-Region					
Burma Extension	KV-1	Shaded fuel break along Burlando Road area. Project ties directly to and extends project KV-5. KRN – 35 acres	Shaded fuelbreak.	KRN KRVFSC 2010 Grant Project	Completed 2012
Plater Road	KV-2	Create defensible space through a chipping project in a community of 16 homes. The community is located between Kernville and Wofford Heights. KRN – 8 acres	Thin existing vegetation among residences and brush the access roads to provide a safer route for property owners and emergency equipment.	KRN, CND KRVFSC grant proposal	Kern County Fire Department will contact Plater Road residents regarding their interest in hosting a chipper day. BLM can participate in the

Project Name And Status	Map Key	Project Location and Size	Type of Project	Responsible Agency	Dates of Planning and Implementation
		CND - 5 acres			chipper day as well and treat adjacent BLM land as needed.
Frontier Homes Maintenance Phase	KV-3	Road brushing with fuel break along both sides of Frontier Trail (North & South). 1.4 miles of road brushing with 21.7 acres total cut.	Shaded fuelbreak.	KRN	Initial completion 2001. Maintenance completed 2011 as part of KV-1
Grandview 2012 Maintenance Completed	KV-4	Fuel reduction behind developed lots in Kernville from Burlando Road, behind Greenleaf, to Grandview, to Spruce. 30 acres	Shaded fuelbreak.	KRN Maintenance 2012 KRVFSC grant project	Initial completion 1994. Maintenance 2006 and 2008.
Kernville/River Kern Hazardous Fuels Reduction Maintenance Phase	KV-5	There are three units in this project: The Burma unit is near Burma Road and is 30 acres in size. Burma ties directly into KV-1. The Bowman/Luxton unit surrounds the private property just north of the Kernville Airport and is 24 acres in size. Riverkern 25 acres USFS The Riverkern project is on the east side of Riverkern.	Shaded fuelbreak.	USFS	Work on the Riverkern unit has been in maintenance status since the late 1990's. Burma and Bowman/Luxton units completed in 2007 and maintained annually. NEPA being updated 2012, combining USFS Kernville/Riverkern, projects

Project Name And Status	Map Key	Project Location and Size	Type of Project	Responsible Agency	Dates of Planning and Implementation
Rodgers Road Rodgers Road 2 Maintenance Phase	KV-6	Fuel reduction in drainage adjacent to Rodgers Road. Kernville. 4.8 Acres.	Shaded fuelbreak.	KRN KRVFSC 2006 Grant Project	Rogers Road was completed in 2004. Maintenance completed 2011 as part of KV-1
Tollefson 2012 Maintenance Completed	KV-7	Fuels reduction to connect the Frontier Homes and Grandview fuel breaks. 4.2 acres.	Shaded fuelbreak.	KRN Maintenance 2012 KRVFSC grant project	Completed 2001. Maintenance completed in 2008.
Lake Isabella Sub-Region					
Bodfish Canyon Phase 2 (40 ac) - 2012 Maintenance Completed	LI-1	Along Bodfish Canyon Road, Eastern end of Butternut Drive, and Bodfish Creek Road, and West of Laurel Drive. 141 acres total KRN land, in 7 units.	Shaded fuelbreak.	KRN KRVFSC 2007, 2008, 2010 Grant Projects Phases 1 and 2 - 2012 KRVFSC maintenance grant projects	Phase 1 (32 ac) - Completed in 2008, 2012 maintenance grant project. Phase 2 (40 ac) – 2008 Completed in 2009, 2012 maintenance grant project Phase 3 (35 ac) – Completed 2011
Erskine Out Year Project	LI-2	Part of Erskine Creek/Spring Gulch/Lynch Canyon Project. Along Erskine Creek Road, from 1.25 miles South East of Kern	Shaded fuelbreak along the road system along riparian area.	KRN, CND	Outyear Project – will monitor road and when it becomes overgrown project will be scheduled for

Project Name And Status	Map Key	Project Location and Size	Type of Project	Responsible Agency	Dates of Planning and Implementation
		<p>Valley High School to junction with Spring Gulch 4x4 Road.</p> <p>Total for this portion is 2.98 miles road work, 127 acres fuel break.</p> <p>KRN portion is 1.89 miles of road, and 76 acres of fuel break.</p> <p>CND portion is 1.2 miles of road and 51 acres of fuel break.</p> <p>Total project is 110 acres private (would require KRVFSC grant), and 125 acres CND.</p> <p>Road work is 3.79 miles on CND, 3.14 miles on KRN.</p>			implementation.
<p>Lynch Canyon</p> <p>Out Year Project</p>	LI-3	<p>This section is from Squirrel Valley south up Lynch Canyon Rd. (dirt) to the Spring Gulch Pass.</p> <p>Ties into LI-2.</p> <p>Total size is 2.29 miles road, and 61 acres of fuelbreak.</p>	<p>Roadside shaded fuel break to facilitate fire suppression.</p> <p>Fuel Break varies in width from 50' to 300'.</p>	<p>KRN, CND</p> <p>KRN portion is .88 miles of road, and 23 acres of fuel break.</p> <p>CND portion is 1.41 miles of road and 38 acres of fuel break.</p> <p>Total project is 110 acres private (would require KRVFSC</p>	<p>Originally implemented in 1990's.</p> <p>Outyear Project – will monitor road and when it becomes overgrown project will be scheduled for implementation.</p>

Project Name And Status	Map Key	Project Location and Size	Type of Project	Responsible Agency	Dates of Planning and Implementation
				grant), and 125 acres CND. Road work is 3.79 miles on CND, 3.14 miles on KRN.	
Meyers Canyon Maintenance Phase	LI-4	Meyers Canyon near Bodfish Canyon. 2 Miles road brushing along primary roads. 20.9 acres of shaded fuel break along drainage west of structures.	Shaded fuelbreak.	KRN KRVFSC 2004 Grant Project All the road brushing and 13.3 acres of the shaded fuel break was funded by a KRVFSC grant. The remainder and maintenance was direct KRN funding. Maintenance 2012 KRVFSC grant project	Project completed 2005. 2012 maintenance grant project.
Squirrel Valley Maintenance Phase	LI-5	Fuels reduction along fence line West of Squirrel Valley. 26 acres existing shaded fuels break. 22 acres proposed addition. A single blade dozer line is put in along the fuel break from Cook Peak Road on the South to	Shaded fuel break.	KRN Maintenance 2012 KRVFSC grant project	Completed 1999. Maintained in 2008. 2012 maintenance grant project

Project Name And Status	Map Key	Project Location and Size	Type of Project	Responsible Agency	Dates of Planning and Implementation
		Hwy 178 on an occasional basis.			
Yankee Canyon Out Year Project	LI-6	In Yankee Canyon Subdivision. 7 to 15 acres.	Roadside clearing and escape route improvement.	KRN, CND	Outyear Project.
Lakeland Estates (Lake Isabella Community Defense Zone) Completed in 2012	LI-7	Fuel break in back yards along the east side of Lake Isabella. 30 to 50 acres.	Shaded fuel break.	KRN KRVFSC 2011 Grant Project	Completed in 2012.
East Valley Sub-Region					
Jacks Out Year Project	EV-1	USFS land bordering the private property in Walker Pass subdivision in Jacks Creek Area.	Shaded fuel breaks adjacent to structures.	USFS	Expected NEPA completion and implementation 2016
Walker Pass Implementation Phase	EV-2	Roadside clearing on BLM land along 0.6 mile adjacent to Highway 178. CND - 8 acres	Reduce fuel loading within 50 feet of each side of Highway 178 through cut and chip. Fell hazard trees from roadside fire & chip branches.	CND	Approximately 75% of project completed 2008. Triangle section scheduled for 2013.
Walker Pass Subdivision Grant Proposal	EV-3	Roadside clearing along roads within the subdivision and along Highway 178 on private land. KRN - 10 acres	Roadside Clearing	KRN KRVFSC grant proposal	

Project Name And Status	Map Key	Project Location and Size	Type of Project	Responsible Agency	Dates of Planning and Implementation
Fay Ranch Out Year Project	EV-4	Along Fay Ranch Road. KRN - 35 acres	Roadside Clearing	KRN	Out year Project. Environmental compliance issues – CEQA.
Kennedy Meadows Sub-Region					
Kennedy Meadows Maintenance Phase	KM-1	34.5 total acres being evaluated as of 11/16/2006.	Clear fuel along 12 miles of roads in Kennedy Meadows including 5 miles of Kennedy Meadows Road. Brush will be removed 20 feet or more from the road and lower tree limbs would be removed.	KRVFSC, KMPOA KRVFSC 2008 Grant Project	Completed in 2008. Review for maintenance in 2013.
BLM Kennedy Meadows Roadside Maintenance Phase	KM-2	Roadside treatment in three sections that border BLM land. 5 acres	Clear brush within 20 feet of roads on BLM land	CND	Completed 2007. Review for maintenance in 2013.
Piutes & Kelso Valley Sub-Region					
Valley View Implementation Phase	P/K-1	Defensible space zone immediately around and adjacent to the Valley View private property in-holding located in the Piute Mountains. 73 acres of USFS.	Shaded fuel break adjacent to private property.	USFS	NEPA was completed in 2010. USFS will begin implementation in 2011, complete by 2013.

Project Name And Status	Map Key	Project Location and Size	Type of Project	Responsible Agency	Dates of Planning and Implementation
Valley View Out Year Project Completed KRVFSC Sponsored Chipper Day in June 2012	P/K-2	Defensible space zone immediately on the Valley View private property in-holding located in the Piute Mountains. 25 acres Private property Out year project is for work to be completed on private lands.	Shaded fuel break on private property.	KRN Proposed project requires KRVFSC grant	Out year KRVFSC grant project is for work to be completed on private lands.
Havilah & Walker Basin Sub-Region					
Piute Meadows Community Escape Route Maintenance Phase and Out Year Project	H/WB-1	Phase 1 - Adjacent to roads in Piute Meadows Community. 5 miles of road for approximately 25 acres. Phase 2 – Adjacent to Caliente/Bodfish Road and other roads within subdivision. Also includes fuel break on BLM land north of subdivision to connect to Breckenridge Road. (10 acres BLM)	Phase 1 - Reduce fuels within 20 feet of each side of arterial roads within community to provide safe access and escape routes. Phase 2 – Roadside clearing and fuel breaks	KRN, CND Phase 1 2009 KRVFSC grant project	Phase 1 - implemented in 2009. Phase 2 – Out year Project
Dutchman Out Year Project	H/WB-2	Dutchman Ridge area on east side of Breckenridge Mountain.	Roadside shaded fuel break	CND, KRN, USFS Private property portion would be a KRVFSC grant proposal.	USFS/CND 2016 Project
Red Mountain	H/WB-3	Red Mountain Subdivision –	Improve defensible space	KRN, USFS, CND	USFS/CND 2016

Project Name And Status	Map Key	Project Location and Size	Type of Project	Responsible Agency	Dates of Planning and Implementation
Subdivision Out Year Project		north of Walker Basin.	in community area and improve escape routes.	Private property portion would be a KRVFSC grant proposal.	Project
Kern Canyon & Breckenridge Sub-Region					
Breckenridge Subdivision NEPA complete for plantation thinning Breckenridge Forest in NEPA Phase	KC/B-1	Defensible space zone immediately around and adjacent to the Breckenridge Subdivision. 1,000 acres plantation thinning 1,000 forest health thinning and hazardous fuels reduction 2013 RAC grant to KRVFSC for Breckenridge Hazardous Fuel Removal Project approved.	Shaded fuel break. The project proposal involves a defensible space, hazardous fuels reduction project around about 15 Breckenridge Subdivision private parcels. Hazardous fuels reduction will be accomplished by property owners and safely removed from area using KRVFSC grant.	USFS	Implementation of plantation thinning is planned to start in 2011. Additional treatment 2012-2015 Hazardous fuel removal project March to August 2013
Lorraine Sub-Region					
No projects identified.					

KRVFSC – Kern River Valley Fire Safe Council
KRN – Kern County Fire Department
TCO – Tulare County Fire Department
USFS – United States Forest Service, Sequoia National Forest, Kern River Ranger District

EV = East Valley	LI = Lake Isabella
H/WB = Havilah/Walker Basin	L = Lorraine
KM = Kennedy Meadows	P/K = Piutes & Kelso Valley
KV = Kernville	WH = Wofford Heights & Alta Sierra
KC/B = Kern Canyon & Breckenridge	

Implementation Phase – The project is being completed.

Maintenance Phase – All projects in shrub fuels need maintenance about every 2 years.

NEPA / CEQA Phase – The proposed project is going through the environmental compliance process.

Outyear Project – Out year new KRVFSC grant proposal projects or new KRN/CND/USFS projects.

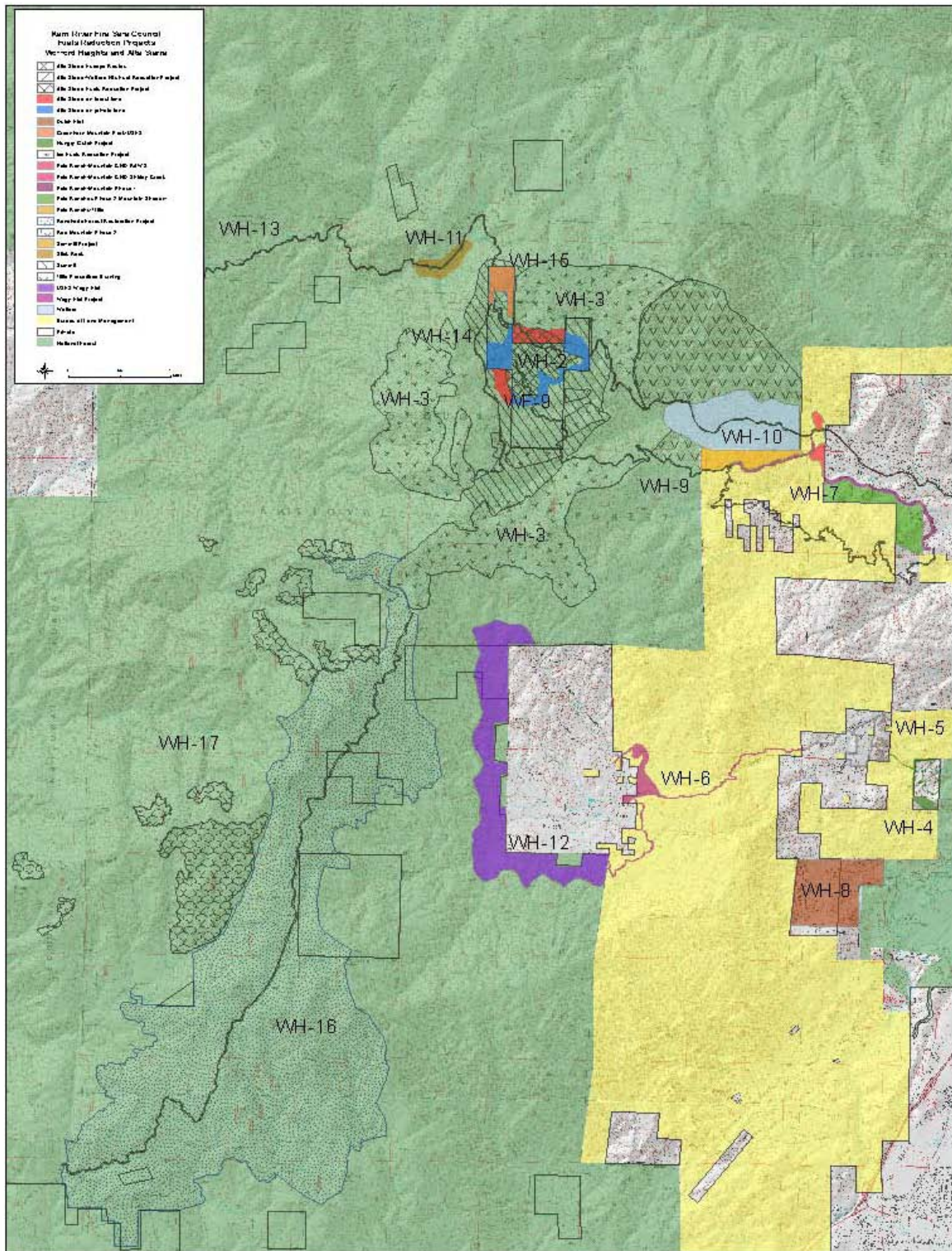
2014 Grant Cycle and Project Priority

For the 2014 grant proposal cycle the projects WERE NOT prioritized by the collaboration group. The backlog of projects and limited resources may result in not proposing any new projects. The relative importance of the out year projects identified in the table below.

Name	Map Region	Relative Importance
Dutch Flat	WH-8	1
Plater Road	KV-2	2
Yankee	LI-6	3
Piute Meadows Community	H/WB-1	4
Fay Ranch	EV-4	5
Red Mountain	H/WB-3	6
Lynch	LI-3	7
Erskine	LI-2	8
Dutchman	H/WB-2	9
Wagy Flat	WH-12	10

Fuel Reduction Project Sub Region Maps

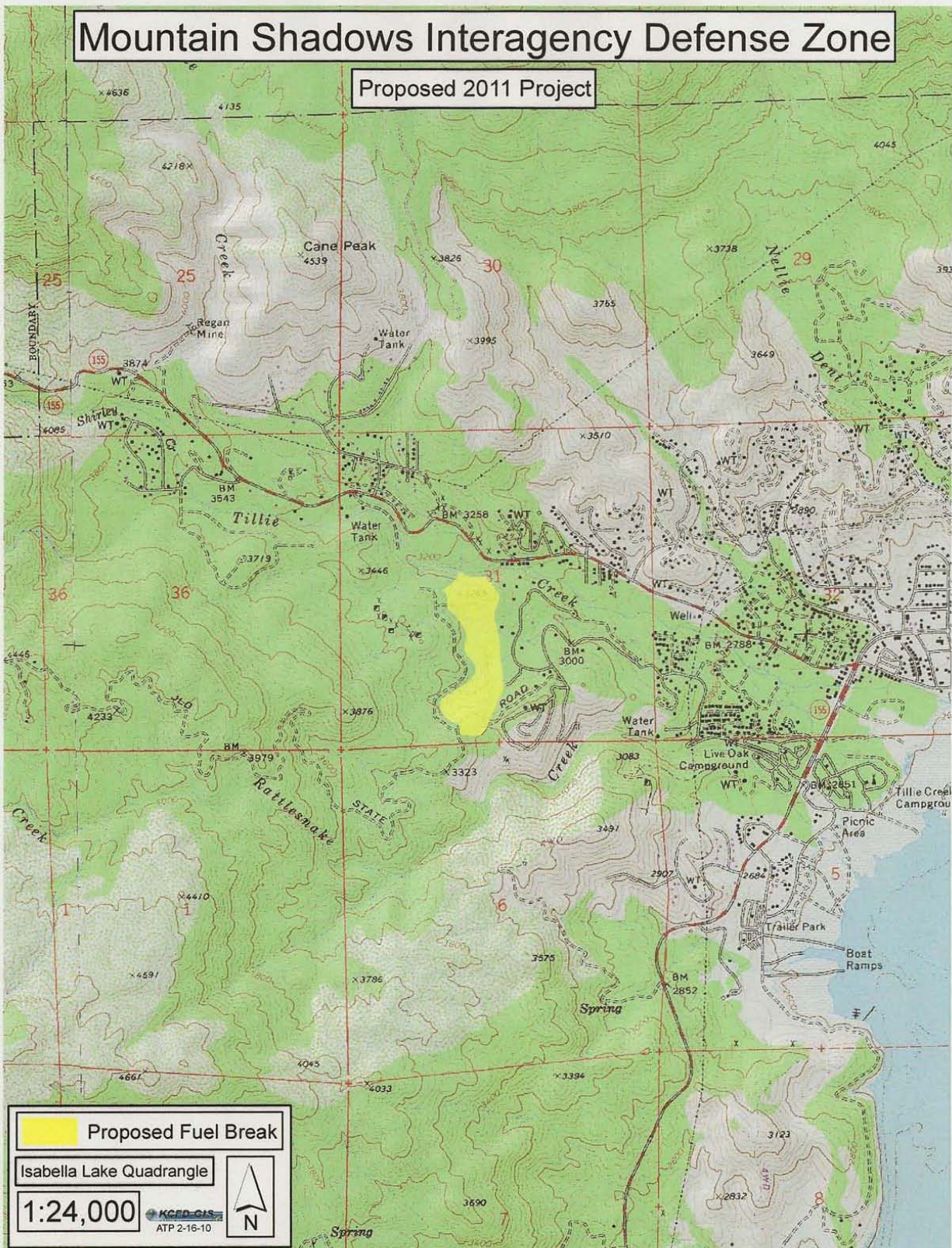
Title	Description	Designation
Wofford Heights and Alta Sierra Sub-Region	General Project Vicinity	WH-1 to WH-17
Completed Projects	2011 Project	WH-7
Current Projects		WH-3, WH-4, WH-5, WH-6, WH-7,WH-9, WH-10, WH-16, WH-17 and WH-18
Outyear Projects		WH-2, WH-8, WH-11, WH-12, WH-13, WH-14, and WH-15
Kernville Sub-Region	General Project Vicinity	KV-1 to KV-7
Lake Isabella Sub-Region	General Project Vicinity	LI-1 to LI-7
Lake Isabella Community Defense Zone	2011 Project	LI-7
East Valley Sub-Region	General Project Vicinity	EV-1 to EV-4
Fay Canyon	General Project Vicinity	EV-4
Walker Pass	General Project Vicinity	EV-1, 2, & 3
Kennedy Meadows Sub-Region	General Project Vicinity	KM- 1 to KM-2
Piutes & Kelso Valley Sub-Region	General Project Vicinity	P/K-1 to P/K-2
Havilah & Walker Basin Sub-Region	General Project Vicinity	H/WB-1 to H/WB-3
Kern Canyon and Breckenridge Sub-Region	General Project Vicinity	KC/B-1
Loraine Sub-Region	No projects Identified	



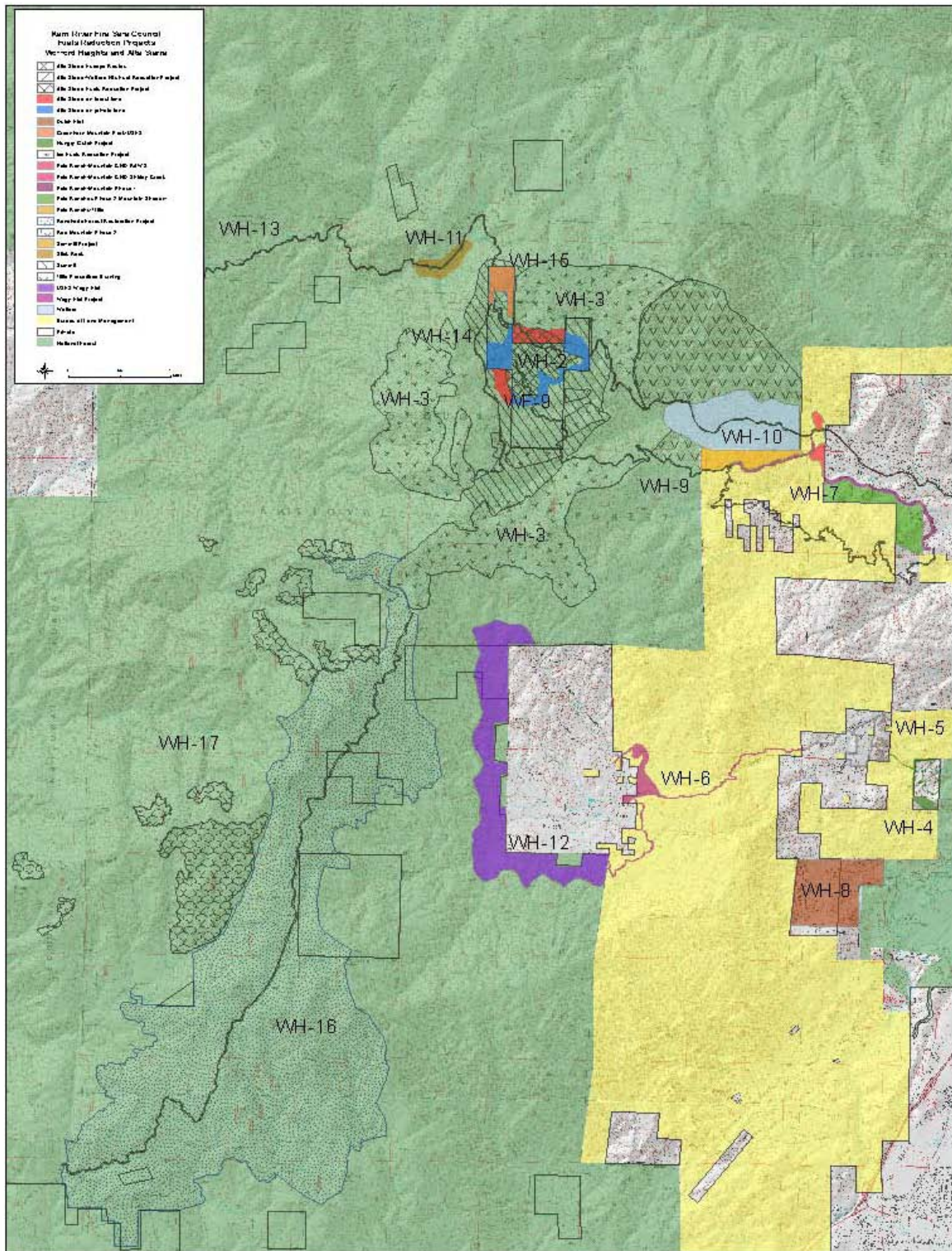
Wofford Heights and Alta Sierra Completed Projects

Mountain Shadows Interagency Defense Zone

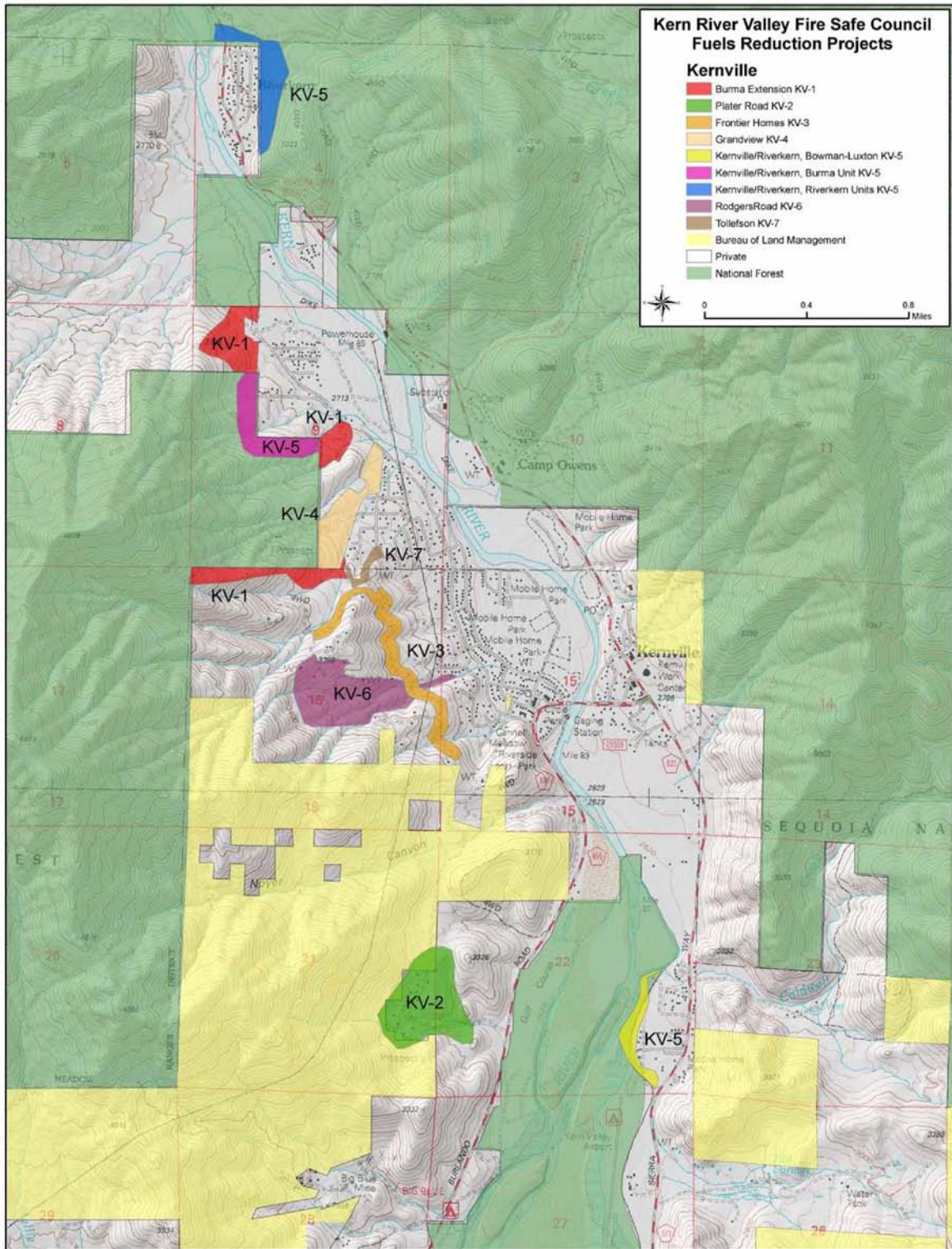
Proposed 2011 Project



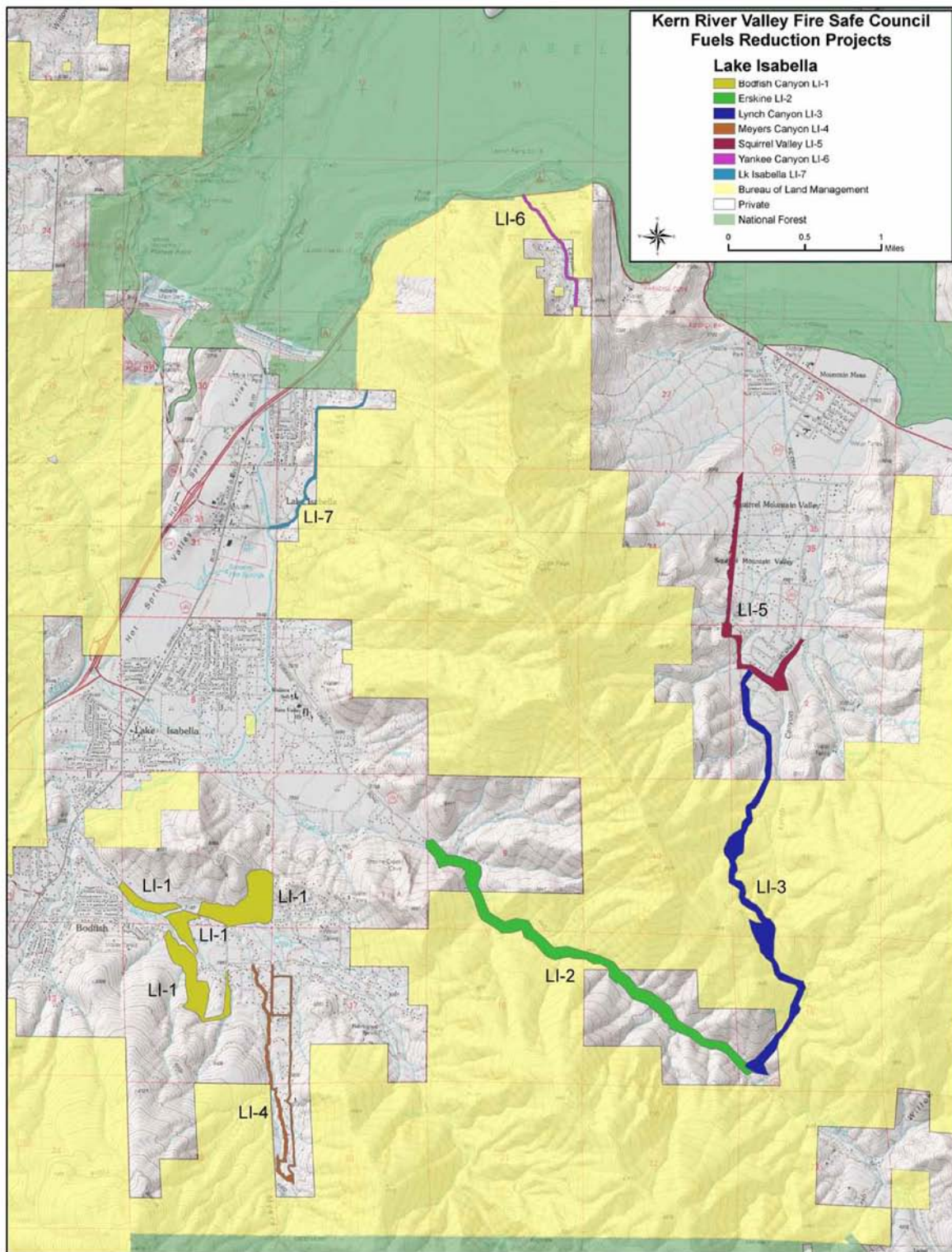
Mountain Shadows Interagency Defense Zone Project (WH-7)



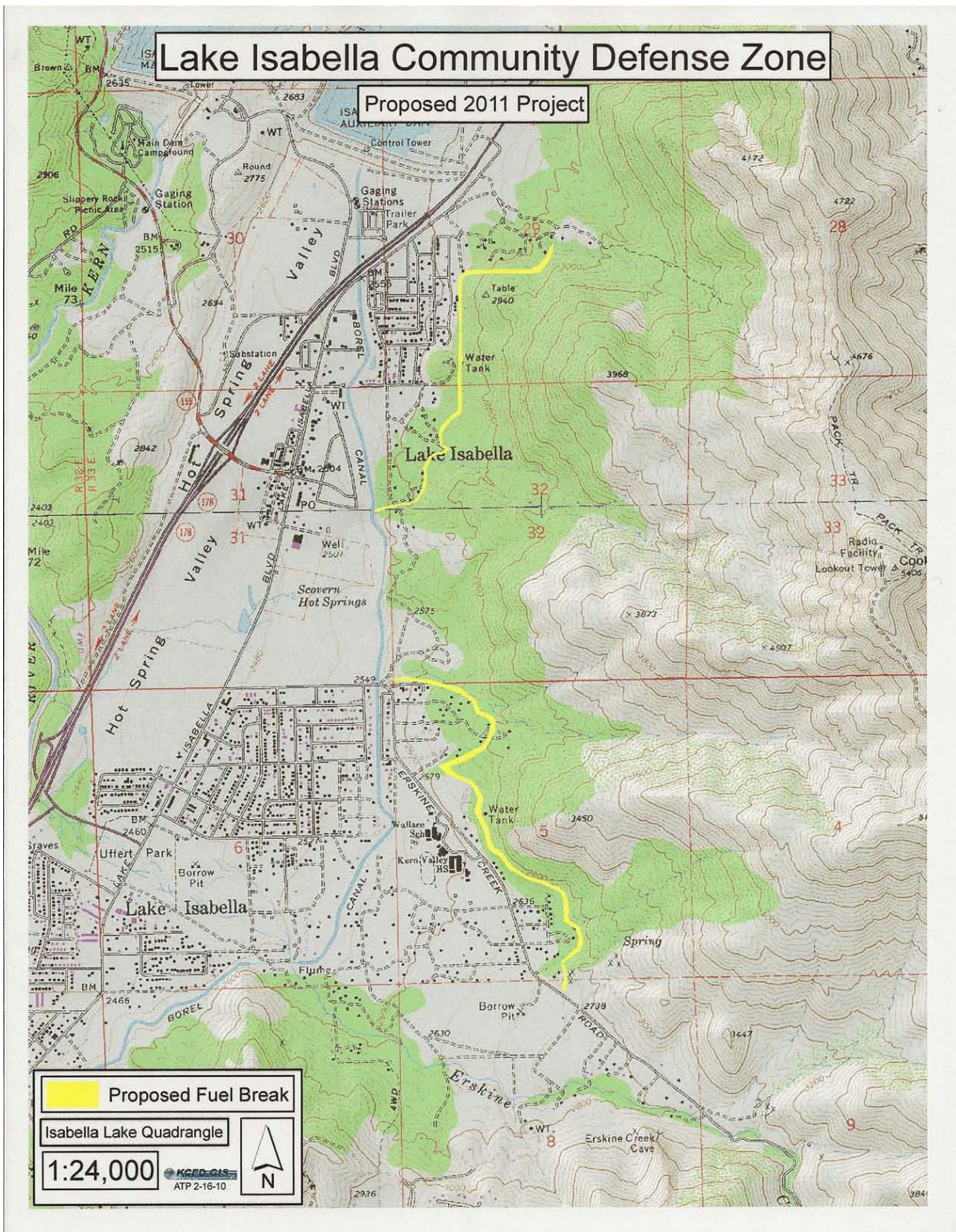
Wofford Heights and Alta Sierra Outyear Projects



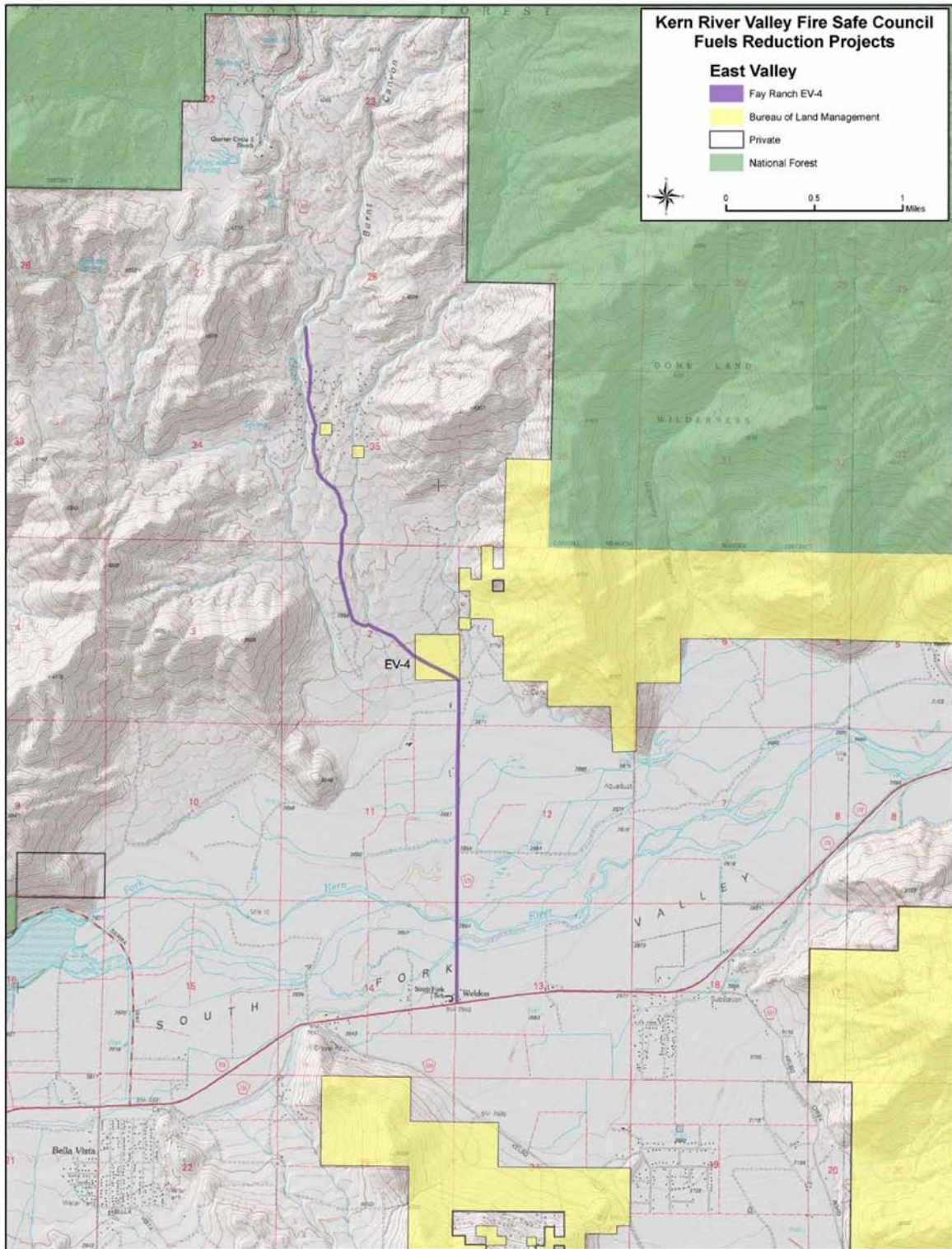
Kernville Sub-Region



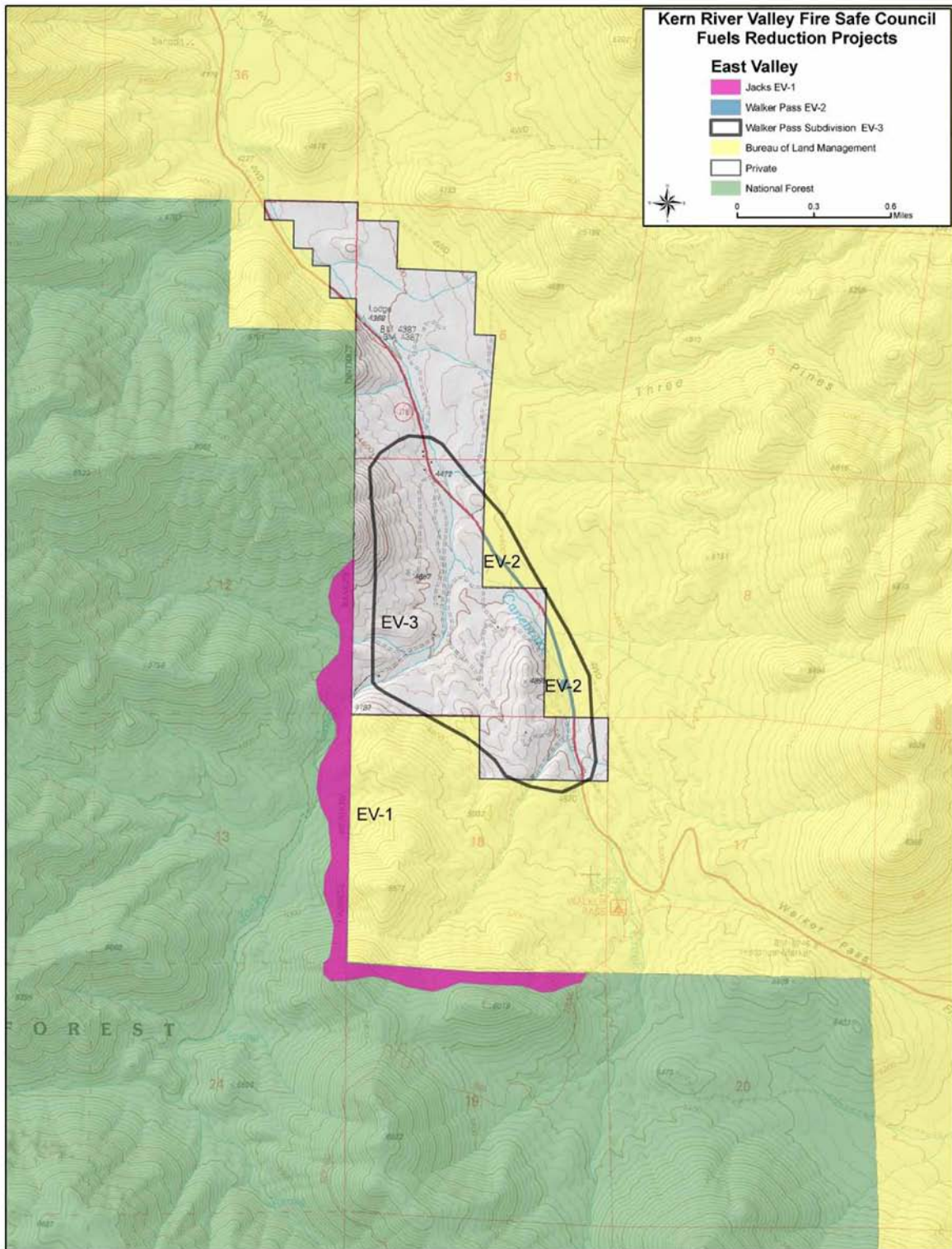
Lake Isabella Sub-Region



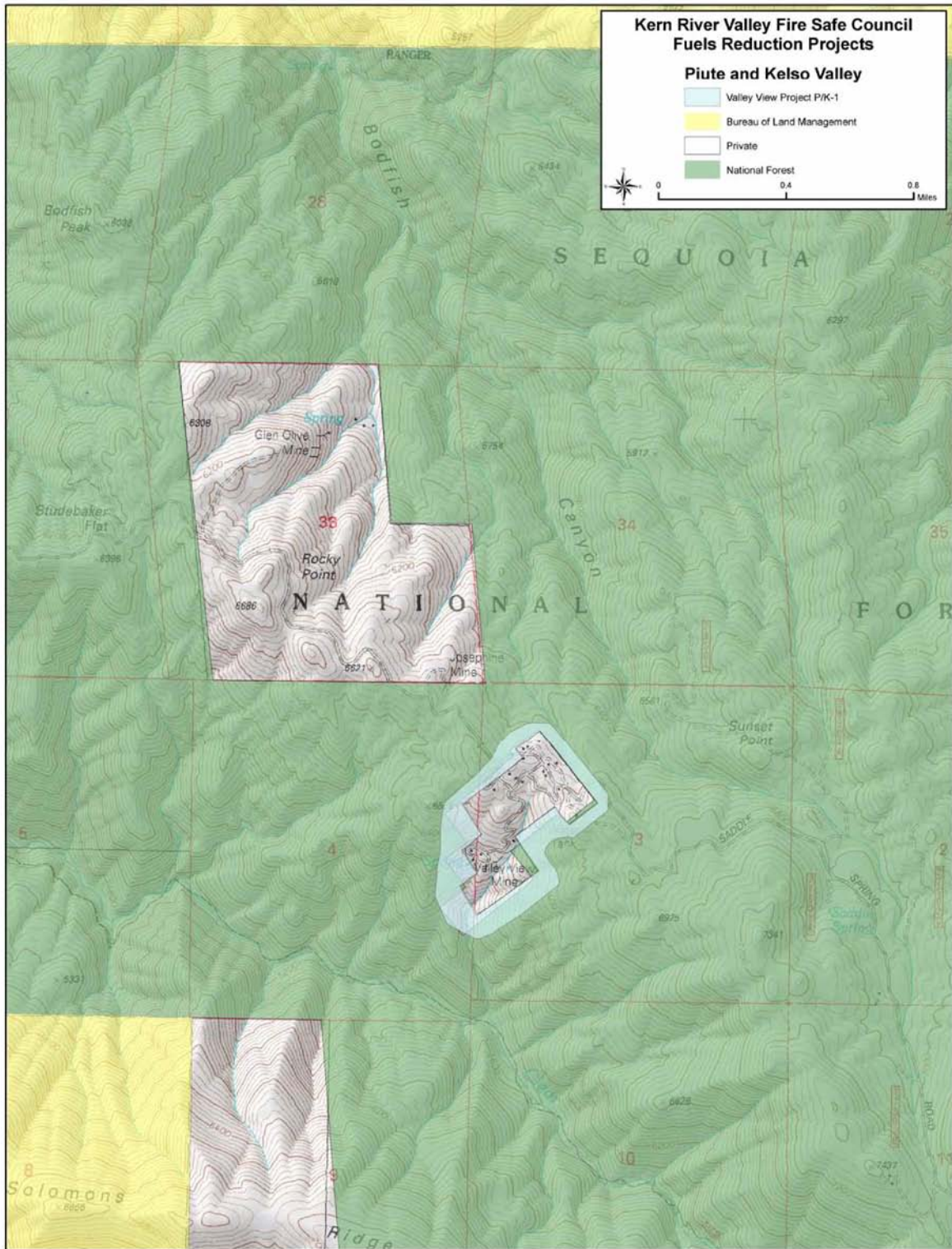
Lake Isabella Community Defense Zone (LI-7)



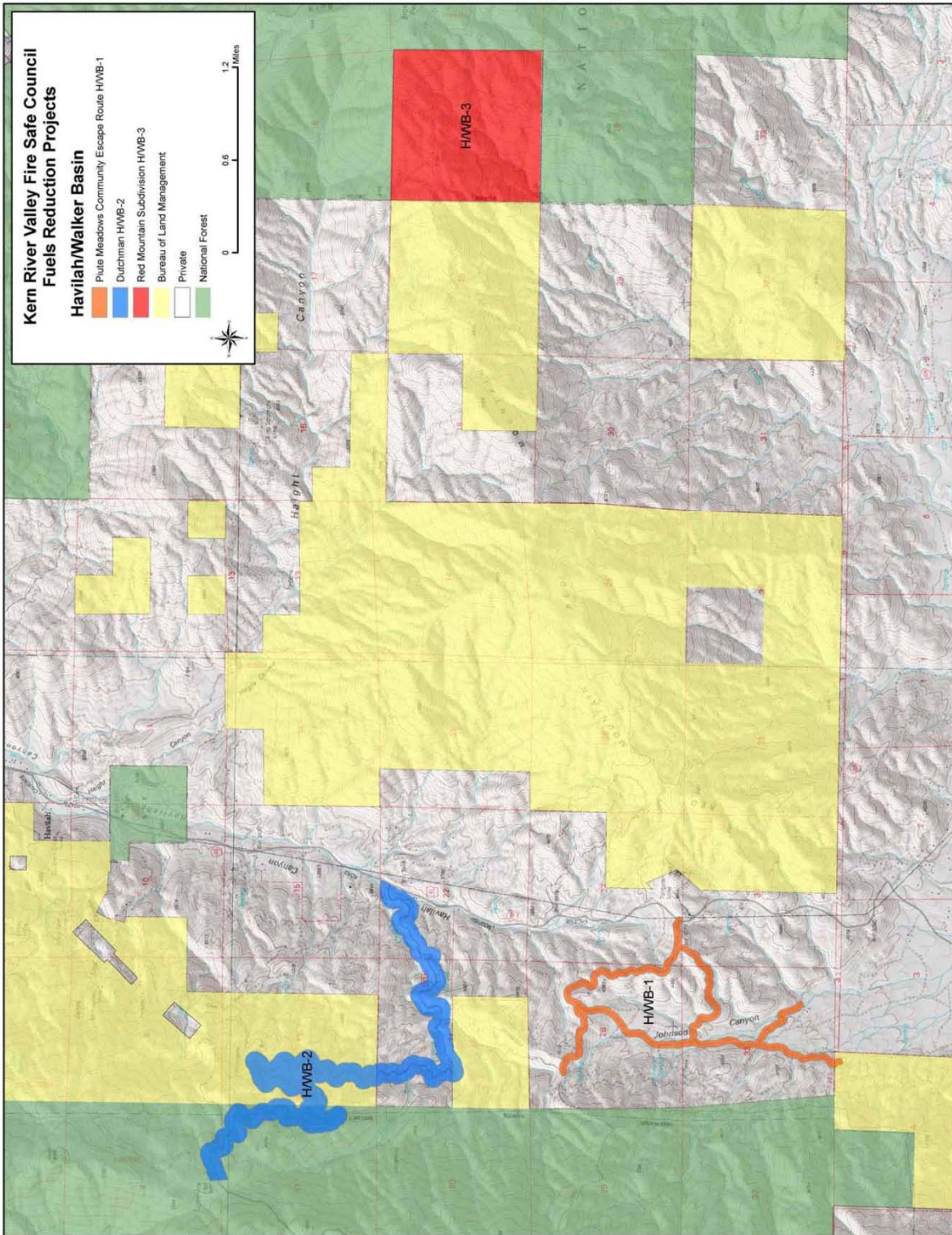
East Valley Sub-Region (EV-4)



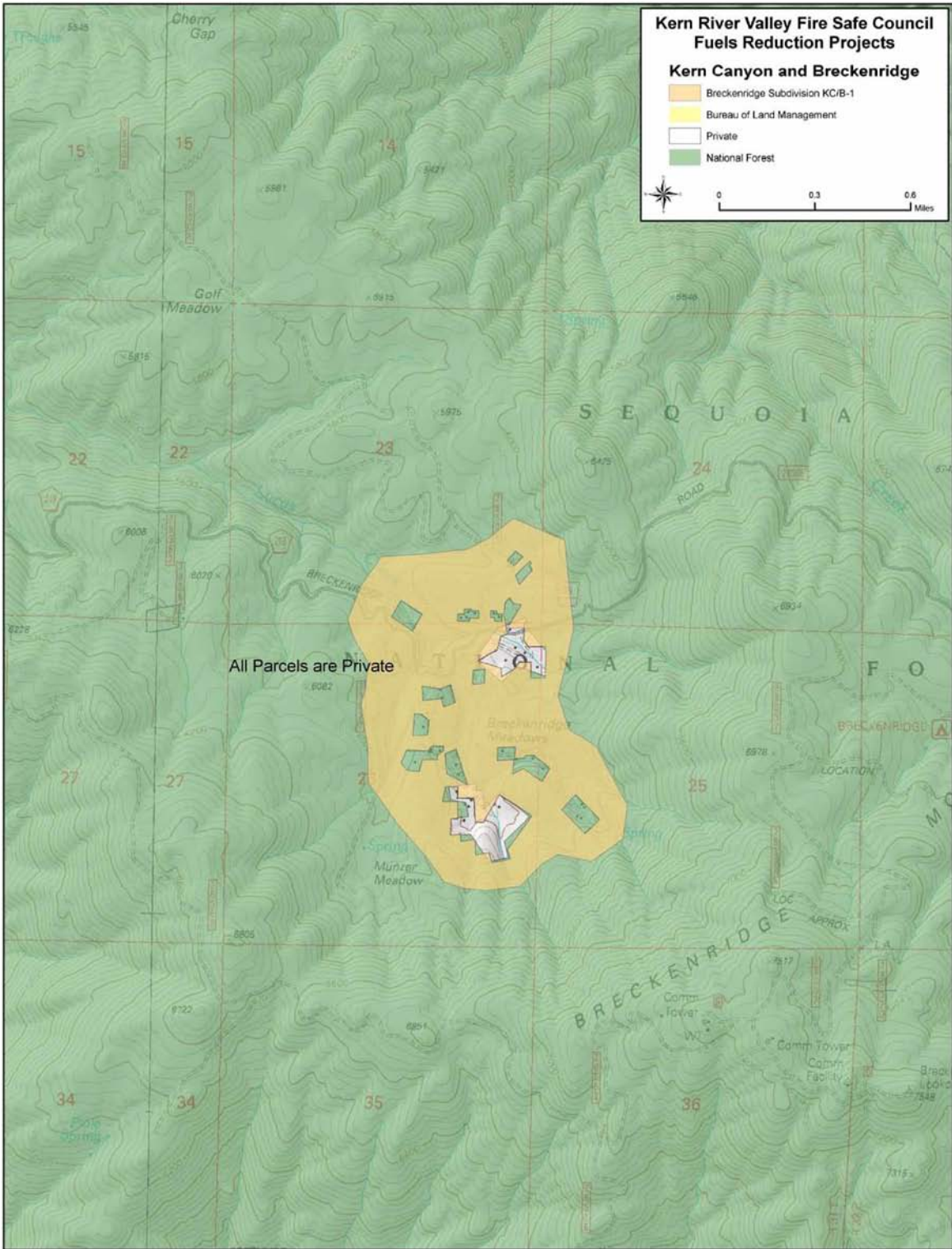
East Valley Sub-Region (EV-1, EV-2, and EV-3)



Piutes & Kelso Valley Sub-Region



Havilah & Walker Basin Sub-Region



Kern Canyon and Breckenridge Sub-Region